



AYANA BALI

MEETINGS · INCENTIVES · CONFERENCES · EXHIBITIONS





REDEFINING EVENTS IN BALI, UNVEILING SEPTEMBER 2026

AYANA Convention Center

AYANA Bali's new Convention Center will elevate the Bali event experience with two sophisticated ballrooms, as well as versatile meeting rooms and outdoor venues. The magnificent ballroom, accommodating up to 2,300 guests, blends Balinese cultural design with the latest technology, creating an exceptional space that harmonizes natural beauty with scale, elegance, and the true charm of Bali. Spread across a 90-hectare site, AYANA Bali offers a total of 993 rooms, suites, and villas across four accommodations, as well as 30 diverse dining options, including the renowned Rock Bar. This makes it an ideal destination for meetings, incentives, conferences, and exhibitions.

The Convention Center complex offers a variety of event spaces, including dedicated breakout rooms, an ocean-view rooftop function room, an open-air terrace and courtyard, and the expansive lawn. From board meetings for 10 guests to banquets for 1,200, or even cocktail receptions under the stars, we can tailor our events to suit your needs.

In addition, supported by the latest technology, an optimized venue layout, and AYANA's highly experienced events team, we ensure seamless and sophisticated execution for every event.

Venue	Location	Measurements (meters)	Height* (meters)	Venue Size (sqm)	Maximum Capacity (pax)					
					Reception	Theater	U-Shape	Classroom	Round Table	Hollow Square
Grand Ballroom	Indoor AYANA Lobby Level	53.4 X 34.7	9	1,850	2,200	2,300	N/A	1,152	1,260	N/A
Grand Ballroom 1	Indoor AYANA Lobby Level	23.7 X 34.7	9	820	1,000	1,020	N/A	540	540	N/A
Grand Ballroom 2	Indoor AYANA Lobby Level	29.7 X 34.7	9	1,030	1,200	1,280	N/A	612	630	N/A
Ungasan	Indoor AYANA Lobby Level	8.5 X 9.8	5.5	90	Boardroom Style - 20					
Veranda	Indoor AYANA Lobby Upper Level	12.6 X 7.0	3.5	90	Boardroom Style - 20 - Layout update					
Veranda Terrace	Outdoor AYANA Lobby Upper Level	21.3 X 13.1	-	235	275	-	-	-	110	-
Akasa	Indoor AYANA Lobby Rooftop Level	13.8 X 6.6	3.4	90	Lounge Style - 30					
AKASA Terrace 1	Outdoor AYANA Lobby Rooftop Level	32.9 X 20.2	-	485	570	-	-	-	200	-
AKASA Terrace 2	Outdoor AYANA Lobby Rooftop Level	36.8 X 19.3	-	710	600	-	-	-	330	-
Uluwatu Courtyard	Outdoor AYANA Lobby Rooftop Level	40.5 X 13.2	-	370	435	-	-	-	150	-
Ungasan Courtyard	Outdoor AYANA Lobby Rooftop Level	80.1 X 13.3	-	735	865	-	-	-	330	-
Jimbaran Courtyard	Outdoor AYANA Lobby Rooftop Level	30.8 X 10.4	-	190	220	-	-	-	100	-
Jimbaran Lawn	Outdoor AYANA Lobby Rooftop Level	44.80 X 36.25	-	1,600	1,800	-	-	-	670	-
AMARA Ballroom	Indoor AYANA Lobby Level	31.2 X 18	6.4	570	670	670	93	288	320	132
Amara 1	Indoor AYANA Lobby Level	9.6 X 18	6.4	174	210	224	57	108	80	66
Amara 2	Indoor AYANA Lobby Level	12.0 X 18	6.4	222	260	270	60	135	150	72
Amara 3	Indoor AYANA Lobby Level	9.6 X 18	6.4	174	210	224	57	108	80	66
Amara Courtyard	Indoor AYANA Lobby Level	21 X 24	-	350	200	-	-	-	200	-

*Height to ceiling lights

Venue	Location	Measurements (meters)	Height* (meters)	Venue Size (sqm)	Maximum Capacity (pax)					
					Reception	Theater	U-Shape	Classroom	Round Table	Hollow Square
Batur	Indoor AYANA Lobby Level	12.9 X 9.0	3.3	110	120	126	33	60	60	48
Batur 1	Indoor AYANA Lobby Level	6.1 X 9.0	3.3	55	60	56	24	24	30	30
Batur 2	Indoor AYANA Lobby Level	6.1 X 9.0	3.3	55	60	56	24	24	30	30
Bratan	Indoor AYANA Lobby Level	7.3 X 7.5	3.3	55	Boardroom Style - 16					
Mandala 1	Indoor AYANA Lobby Level	13.2 X 8.6	3.3	114	130	120	33	54	60	42
Mandala 2	Indoor AYANA Lobby Level	13.2 X 8.6	3.3	114	130	120	33	54	60	42
Mandala 3	Indoor AYANA Lobby Level	13.2 X 8.6	3.3	114	130	120	33	54	60	42
Mandala 2 & 3	Indoor AYANA Lobby Level	13.2 X 17.1	3.3	265	265	240	48	126	120	72
Karang Mas	Indoor AYANA Lobby Level	10.0 X 5.5	3.3	55	Boardroom Style - 16					
Meeting Room 1	Indoor AYANA Lobby Level	7.7 X 4.0	3	31	35	30	15	12	20	18
Meeting Room 2	Indoor AYANA Lobby Level	8.2 X 7.7	3	63	70	60	27	36	30	36
Meeting Room 3	Indoor AYANA Lobby Level	8.1 X 5.5	3	46	50	48	24	24	30	24
Meeting Room 4	Indoor AYANA Lobby Level	9.0 X 6.0	3	54	60	56	24	24	30	30
Meeting Room 3 & 4	Indoor AYANA Lobby Level	11.6 X 8.1	3	100	115	112	24	54	60	48
Meeting Room 5	Indoor AYANA Lobby Level	8.8 X 5.6	3	50	60	56	24	30	30	30
Show Room	Indoor AYANA Lobby Level	12.8 X 5.9	3	80	Round Table - 12					
VIP Room	Indoor AYANA Lobby Level	12.7 X 12.5	2.8	161	Boardroom Style - 14					



Address:
Jalan Karang Mas Sejahtera,
Jimbaran, Bali, Indonesia 80364

Tel:
(+62) 361 702 222 - AYANA

Email:
micesales.bali@ayana.com

Bali Travel Information

Consistently ranked in the Top 10 of the world's most beautiful places every year, the island of Bali is one of the most favorable places to visit in Indonesia's archipelago, attracting many tourists from all over the world. Bali is known for its unique traditions and rich culture, tranquil beaches and serene mountains, as well as colorful flora and fauna. Ngurah Rai International Airport welcomes domestic and international tourists with international standards, and is especially convenient with access via direct flights to and from Australia and across Asia, as well as timely travel originating from Europe and the Americas.

BALI'S CLIMATE

Indonesia is right on the equator, so you can expect a tropical climate all year round with two main seasons: Dry Season and Rainy Season. However, during Rainy Season, rainfall is usually limited to tropical showers rather than all-day rain.

Situated within 10 kilometers of the airport, travelers can expect a stress-free arrival experience, and a memorable first impression of Bali's legendary hospitality, with the assistance of AYANA's friendly team of professional drivers. AYANA's knowledgeable MICE planning team is on task to enrich every event with a touch of authentic Balinese lifestyle, including cultural, culinary, and wellness activities that can be added to your itinerary. For groups interested in exploring off-site points of interest, one-of-a-kind excursions can be organized to notable cultural attractions such as Pura Tirta Empul in Ubud, renowned for its Hindu purification rituals.

LANGUAGE

Indonesian is the national language, but English and sometimes Japanese are spoken at hotels, restaurants and shopping areas.

	JAN	FEB	MAR	APR	MAY	JUN	JUL	AUG	SEP	OCT	NOV	DEC
LOW (°C)	25	25	25	25	25	25	25	25	25	25	25	25
HIGH (°C)	31	31	31	31	31	31	31	31	31	31	31	31
RAINFALL (ML)	285	230	125	86	45	29	24	10	19	66	101	188

The above information is as of April 2026. Please check the latest information when planning your trip.

VISA & IMMIGRATION

PASSPORT	Your passport must be valid for more than 6 months and have more than 3 empty pages.
VISA	Most nationalities require a visa to visit Indonesia.
	Make sure to prepare your valid passport and return flight ticket.



Contents

ABOUT AYANA BALI

Bali Travel Information	5
Reasons to Stay at Our Resort	7
Awards	8
Resort Map	9–10

ACCOMMODATION

RIMBA by AYANA	11
AYANA Resort	12
AYANA Segara	13
AYANA Villas Bali	14
Room Comparison	15–16

MEETING ROOMS AND EVENT VENUES

Meeting rooms and event venue configuration	17–18
---	-------

INDOOR VENUES

Amara Ballroom	19
Batur	20
Karang Mas, RIMBA Ballroom	21
Ulin, Cendana	22

OUTDOOR VENUES

Tevana Garden	23
RIMBA Lawn	24
SKY	25–27
AYANA Villa	28
Champa Garden	29
Asmara	30
Bale Kencana	31
Vista	32
SAKA Museum	33
KISIK Pier	34

MEETING PACKAGES

Details of Packages	35
---------------------	----

EVENT IMAGES

Settings/Decorations	36
Menus/Entertainment	37

RESTAURANTS & BARS

AYANA Restaurants

After Rock (<i>Bar</i>)	38
Rock Bar (<i>Bar/Mediterranean cuisine</i>)	39–40
Padi (<i>Breakfast/Asian cuisine</i>)	41
Sami Sami (<i>Italian cuisine</i>)	42
DAVA (<i>Steak & Seafood grill</i>)	43

AYANA Segara Restaurants

Karang (<i>All-day dining/Indonesian cuisine</i>)	44
Scusa (<i>Dinner/Mediterranean cuisine</i>)	45
Luna Rooftop Bar (<i>Bar/Light bites</i>)	46

RIMBA Restaurants

To'Ge (<i>Breakfast/International cuisine</i>)	47
UNIQUE Rooftop Bar & Restaurant (<i>Bar/Mexican cuisine</i>)	48
Kampoeng Bali (<i>Outdoor amphitheater — Balinese buffet dinner with cultural show</i>)	49
Liu Li Seafood Palace Restaurant (<i>Cantonese and Szechuan cuisine</i>)	50
Others	51–52

Team Building/Leisure Facilities	53–54
----------------------------------	-------

Reasons to Stay at Our Resort

Located amidst clifftop gardens and with world-class facilities, AYANA Bali is the only fully integrated resort on the island. It offers the perfect destination for memorable meetings and events, as well as luxurious vacations, in one stunning retreat.



LOCATION

Bali is a comfortable and convenient MICE destination, easily accessible via direct flights from Australia, Singapore, Hong Kong, and many other major cities. Its tropical charm and world-class facilities make it one of Asia's most popular locations for international events.

AYANA Bali is located along southern Bali's sunset coast and above the famous fishing village of Jimbaran, just a 20-minute drive from Ngurah Rai International Airport. Overlooking the shimmering Indian Ocean, this exceptional location is designed to be enjoyed before and after business meetings or conferences to maximize every moment in Bali.

STUNNING SPACES AND ACCOMMODATIONS

AYANA is situated on the 90-hectare Karang Mas Estate, and offers a wide range of meeting venues and facilities surrounded by beautiful nature. The resort features 993 guest rooms and suites, including stunning pool villas, ensuring an accommodation choice to suit all participants.

WIDE RANGE OF MEETING AND EVENT VENUES

The resort is appointed with 33 indoor and outdoor event venues, which provide unique settings for your needs. Overlooking 180-degree ocean views with breathtaking sunset moments, outdoor event venues SKY, Champa Garden, Kampoeng Bali, and the world-famous Rock Bar, BALI promise to present an unforgettable backdrop to your special event.

AYANA Bali's diverse collection of venues makes the resort an ideal MICE destination, offering everything from elegant private meeting rooms for executive discussions to expansive manicured gardens that can accommodate up to 3,000 guests for spectacular gala dinners.

SUSTAINABILITY COMMITMENT

AYANA integrates sustainability into every detail, from zero waste initiatives and renewable energy to water stewardship and community partnerships that support local livelihoods.

AYANA HOSPITALITY

Our professional meeting planners and international chefs from around the world, and a total of 1,300 resort team members are here to help you organize and manage your event to ensure its success.

The resort provides multilingual staff — including Japanese and Mandarin-speaking team members — to support overseas guests. We offer translation and interpreting services for smooth communication.

UTMOST RELAXATION

As an alternative to a coffee break, our personalized 'spa breaks' include a shoulder massage or Thalassotherapy Pool treatment at AYANA Spa Bali, which can accommodate up to 30 guests.

For team-building programs or break-out sessions, AYANA Bali offers a wide variety of facilities and activities, including 14 swimming pools, an 18-hole golf putting course, sunrise yoga, a jogging track, a secluded white-sand beach, and a cooking school.

RECHARGE

With over 30 restaurants and bars, participants can enjoy a diverse range of cuisines from around the world, including Indonesian, Italian, Mexican, Mediterranean, Chinese, Thai, Indian, Japanese and Western, along with fresh local seafood and succulent grilled specialties.

Our international chefs are renowned for their spectacular themed dinners and special cocktail events to suit every occasion.

AUTHENTIC CULTURAL EXPERIENCES

AYANA's community-led cultural experiences invite you to explore Bali's living traditions through workshops, cooking, museums, and village celebrations.

Award-winning Resort



DATA

Opened: **November 1996**

RIMBA opened: **October 2013**

AYANA Segara opened: **November 2022**

Total land space: **90 Hectares**

Distance from the airport: **10km, 20 mins by car**

NUMBER OF GUEST ROOMS:

AYANA Resort (294 rooms)

RIMBA by AYANA (403 rooms)

AYANA Segara (223 rooms)

AYANA Villas (73 villas)

Website: ayana.com

Forbes Travel Guide

- 2024** FORBES — Best Spa and Wellness Resort in Bali: AYANA Resort Bali
- 2017** 5-star Winner (AYANA Villas Bali)

Condé Nast Johansens

- 2024** Condé Nast Johansens — Best Spa Facilities: AYANA Resort Bali
- Condé Nast Johansens — Excellence 2024
Winners: Luxury Spa Awards

World Luxury Hotel Awards

- 2024** World Luxury Hotel Awards – AYANA Resort Bali: 2024 Luxury Ocean View Resort Global Winner
- World Luxury Hotel Awards – AYANA Resort Bali: 2024 Luxury Villa Continent Winner Asia
- World Luxury Hotel Awards – AYANA Bali: Gala Ceremony Host of the 2024 World Luxury Awards
- 2018, 2017** Luxury Thalasso & Spa Resort Continent Winner Asia (AYANA Resort Bali)
- 2018, 2017** Luxury Architecture Design Hotel Regional Winner of Southern Asia (RIMBA by AYANA Bali)

Travel + Leisure

- 2023** Travel + Leisure Luxury Awards Asia Pacific — Best Hotel Spa in Indonesia: AYANA Resort Bali
- Travel + Leisure India's Best Awards 2023 — Best Leisure Hotel (International): AYANA Resort Bali

World Travel Awards

- 2023** World Travel Awards — Asia's Leading Family Resort 2023: RIMBA by AYANA Bali
- 2021** Asia's Leading Family Resort (RIMBA by AYANA Bali)
- 2021, 2018** World's Leading Luxury Island Villas (AYANA Villas Bali)
- 2018, 2017** World's Leading Family Resort (RIMBA by AYANA Bali)

World Luxury Spa Awards

- 2016** Best Emerging Spa, Country Winner (AYANA Spa Bali)

World Spa Awards

- 2017, 2016** Indonesia's Best Resort Spa (AYANA Spa Bali)

Earth Check — Certification

- 2025** Gold Certification (AYANA Resort Bali)
- 2024, 2018, 2017** Silver Certification (AYANA Resort Bali)



Restaurants & Bars

- | | |
|-------------------------|-------------------------------------|
| 1 Padi | 13 Scusa |
| 2 Damar Terrace | 14 Luna Rooftop Bar |
| 3 Sami Sami | 15 Honzen |
| 4 Rock Bar | 16 Sumizen |
| 5 I.C.E | 17 Unique Rooftop Bar |
| 6 KISIK Lounge | 18 To'Ge Restaurant |
| 7 KISIK Seafood & Grill | 19 Liu Li Palace Seafood Restaurant |
| 8 Spa Cafe | 20 Kampoeng Bali |
| 9 DAVA Steak & Seafood | 21 Forest Bar |
| 10 Martini Bar | 22 Orchid Lounge |
| 11 Kubu Beach Club | 23 SAKA Cafe |
| 12 Karang | 24 AFTER Rock |

Tram



Places to Visit

- | | |
|-------------------------|------------------|
| 11 Kubu Beach | 25 Tevana Garden |
| 23 SAKA Museum | 26 AYANA Farm |
| 27 Thalassotherapy Pool | |

Pools

Opening Hours: 7 AM - 7 PM

- | | |
|---|--|
| A AYANA Main Pool | H RIMBA Upper Pool
Ages 12+ only |
| B AYANA Lower Pool | I RIMBA Cabana Pool |
| C AYANA Kids Pool / Water Slide | J RIMBA Lower Pool/ Kid's pool Water Slide |
| D Ocean Beach Pool
Ages 12+ only | K Three Monkeys Pool |
| E H2O / River Pool
Exclusive for Villa Guests:
10 AM - 7 PM | L UNIQUE Rooftop Pool
11 AM - 11 PM |
| F Segara Pool | M Forest Pool |
| G LUNA Rooftop Pool
Ages 12+ only
9 AM - 11 PM | |





Shopping Arcade

- Quiksilver
- Double K by Bali Baci
- By the Sea
- Valerie
- I.C.E & all things nice
- John Hardy
- Hotel Boutique
- Axioo
- Uluwatu Lace
- Jamu & Spice Store
- Jenggala
- JUNO Bali

- Breakfast Venue
- Tram Stop
- Lobby
- Parking Lot
- Shop
- Business Center
- Meeting Room
- Fitness Facility
- Wedding Venue
- Recreational Facility
- Putting Golf
- Tennis Court
- Beach
- Kids Facility
- Park
- Spa & Wellness
- ATM
- Money Changer
- Kids Camp



RIMBA by AYANA Bali

Surrounded by lush forest and pristine water features, RIMBA by AYANA is a chic and contemporary resort, harmoniously blending with beautiful nature. 403 stylish rooms and suites are located amongst blooming tropical gardens, overlooking beautiful swimming pools. Upper floor rooms and suites enjoy stunning forest views toward the Indian Ocean and beyond, with a furnished private balcony and comfortable daybed. Experience the royal treatment with a luxurious and well-appointed bathroom.

Room facilities and amenities

High speed internet access / Wi-Fi broadband

LED TV

Cable programs / satellite channels

International direct dial telephone

Private balcony

Complimentary tea and coffee-making facilities, mineral water, and fresh tropical fruits

Fridge and electric kettle

Separate bathroom with rain shower and spacious bathtub

Bathrobe and slippers

Bathroom amenities (shampoo, hair conditioner, body soap, body lotion, soap bar, toothbrush, toothpaste, mouthwash, comb, and shaving razor)

Hair dryer

Twice a day room cleaning service

Safety deposit box

Writing desk and sofa

Iron and ironing board

C-type & multi-type wall socket

In suites, extra bed available on request / in other rooms, sofa bed is available on request

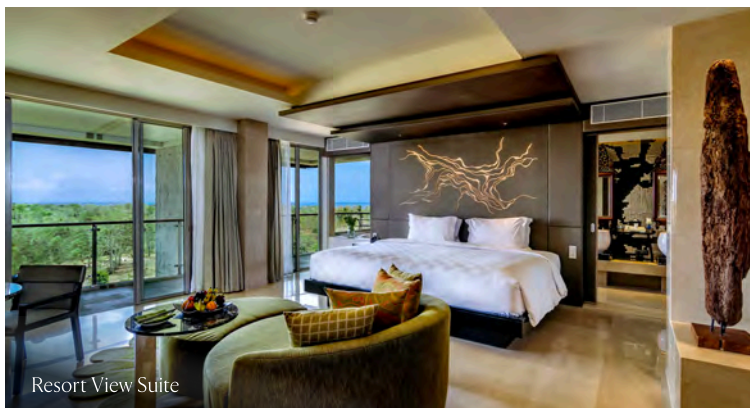
Baby cot (on request)

Interconnecting room (on request)

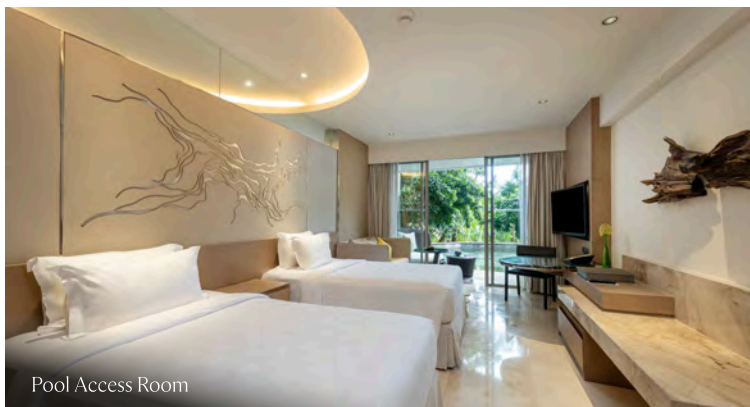
Adapter (on request)



Rimba Lobby



Resort View Suite



Pool Access Room



Multi-level Swimming Pool



Kids' Pool



AYANA Resort Bali

With views across manicured botanical gardens, toward the Indian Ocean and beyond, AYANA Resort is perfectly positioned to enjoy Bali's famed sunsets. Each of the 294 renovated rooms and suites feature regal island decor with traditional touches such as intricately carved furnishings, textiles and beautiful artworks crafted in villages across Bali. Each room and suite features a luxurious marble bathroom with individual rain shower booth and spacious tub, an elegant bedroom, modern refined, and fine amenities.

Enjoy a relaxing and comfortable stay flawlessly blends a contemporary resort lifestyle with a traditional Balinese touch.

Room facilities and amenities

Complimentary high speed internet access / Wi-Fi broadband

LED TV

Cable programs / satellite channels

International direct dial telephone

Private balcony

Complimentary tea and coffee-making facilities, mineral water, and fresh tropical fruits

Fridge and minibar

Separate bathroom and rain shower, spacious bathtub

Bathrobe and slippers

Bathroom amenities (shampoo, hair conditioner, body soap, body lotion, soap bar, toothbrush, toothpaste, mouthwash, comb, and shaving razor)

Hair dryer

Twice a day room cleaning service

Safety deposit box

Writing desk and sofa

Iron and ironing board

C-type & multi-type wall socket

Interconnecting rooms (on request)

Extra bed (on request)

Baby cot (on request)

Adapter (on request)



View from Lobby



Ocean View Room



Ocean View Suite



Padi Restaurant



Ocean Beach Pool



AYANA Segara Bali

Perched above the tree line and nestled between lush tropical gardens on a pristine cliffside, AYANA Segara introduces a looser kind of luxury to AYANA. Dynamic spaces combine a rich, natural aesthetic with an undeniable sense of clifftop cool for an indulgent, alluring getaway.

Room facilities and amenities

Dual vanity sink

Deep soaking bathtub

Private balcony

Walk-in closet

Dressing room

Writing table

Aromatic burner set

Designer toiletries

Bluetooth speakers

Interconnecting room (on request)

King size bed

Marble bathrooms

Minibar

Coffee & tea-making facilities

Complimentary resort-wide Wi-Fi

LED TV

Extra bed (on request)



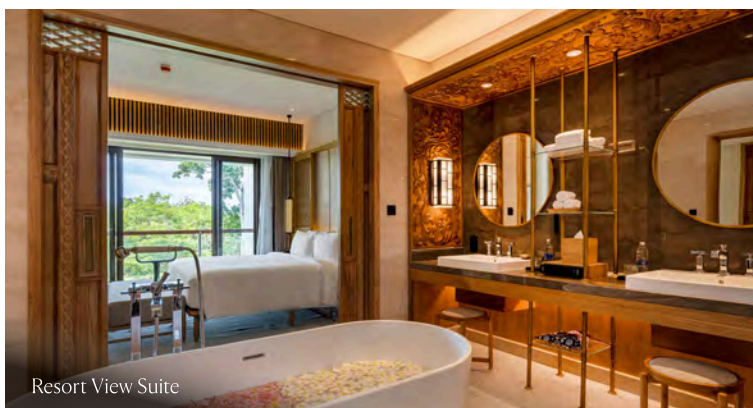
Resort View Room



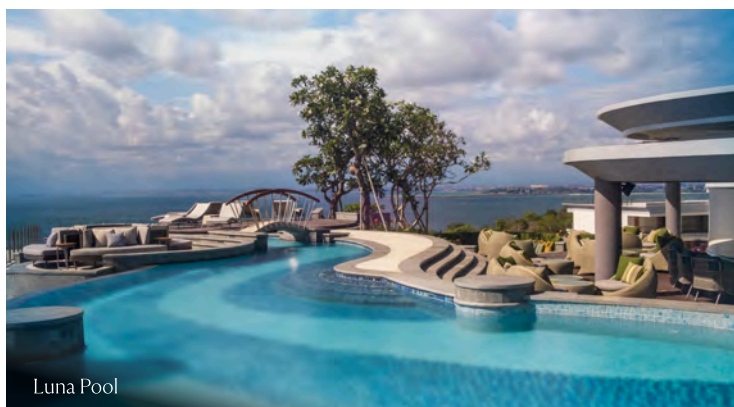
Ocean View Room



Resort View Suite



Resort View Suite



Luna Pool



Scusa



AYANA Villas Bali

Constituting a 'resort within a resort', the 73 private pool villas at AYANA Bali offer discerning guests the highest level of personalized service, comfort, and exclusive benefits, with dedicated assistance from internationally certified butlers to bring guests to a new realm of relaxation.

Each villa features a private pool with cozy gazebo, separate living area, and luxurious marble bathroom. Enjoy a candle-lit dinner for two with live quartet music, our signature Floating Brunch in your villa pool, or a soul-balancing massage all without leaving your private sanctuary.

Room facilities and amenities

24-hour butler service, buggy service

Private plunge pool

Complimentary high speed internet access / Wi-Fi broadband

LED TV

Cable programs / satellite channels

International direct dial telephone and in-house use cell-phone

Fridge and minibar

Separate bathroom and rain shower, spacious bathtub

Bath robe, room slippers

Hair dryer

Twice-a-day room cleaning service

Safety deposit box

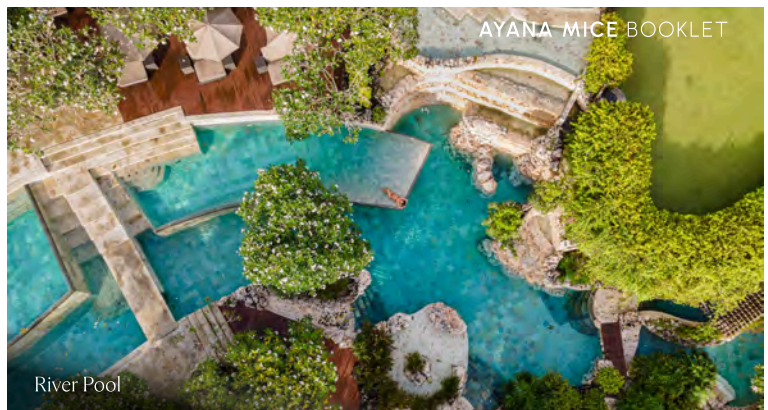
Writing desk and sofa / iron and ironing board

C-type & multi-type wall socket

Adapter (on request)

Aromatic diffuser

Extra bed (on request)



River Pool



1 Bedroom Villa Bathroom



1 Bedroom Ocean View Villa



1 Bedroom Oceanfront Villa



The AYANA Villa

Room Comparison

RIMBA

ROOM CATEGORY	DESCRIPTION	SIZE (M ²)	# of twin beds	# of king-size beds	Total # of rooms
Resort View Room	This sophisticated 42 m ² Resort View Room inspires with expansive views of RIMBA's forest canopy and flowering tropical gardens, from the balcony.	42 m ²	142	79	221
Jimbaran Bay Room	Enjoy elevated Indian Ocean and tropical garden views from this contemporary 42 m ² Jimbaran Bay View Room.	42 m ²	6	13	19
Pool Access Room	The sophisticated 42 m ² Pool Access Room exhilarates the senses with direct access to a semi-private lagoon style swimming pool from a tropically landscaped ground floor terrace.	42 m ²	10	1	11
Resort View Suite	Each 82 m ² Resort View Suite is thoughtfully designed around inspiring views of the surrounding forest, tropical gardens and shimmering multi-tiered pools from the suite's balcony.	82 m ²	11	19	30
Pool Access Suite	Each sophisticated Pool Access Suite is designed to rejuvenate the sense with direct semi-private swimming pool access from the tropically landscape ground floor terrace	82 m ²	0	2	2
2BR Resort View Room	Thoughtfully designed set of connected rooms offers breathtaking views of the RIMBA's lush forest, making it the perfect choice for families.	84 m ²	8 (twin + king)		8*
2BR Resort View Suite	Enjoy the stunning views of the Indian Ocean and the tropical garden from the expansive connecting rooms perfect for families holiday.	124 m ²	7 (twin + king)		7*
Total			169	114	283

RIMBA Wana

ROOM CATEGORY	DESCRIPTION	SIZE (M ²)	# of twin beds	# of king-size beds	Total # of rooms
Wana Resort View Room	Experience scenic views of verdant trees and diverse flora and fauna, without leaving your Wana Resort view room.	53 m ²	11	7	18
Wana Garden View Room	The Wana Garden View Room offers stunning views of RIMBA's forest and the serene Tevana Garden, perfect for guests seeking a connection with nature.	53 m ²	22	23	45
Wana Ocean View Room	Enjoy elevated views of the turquoise Indian Ocean and emerald garden in a luxurious room clad in jungle green.	53 m ²	25	22	47
Wana Pool Access Room	The Wana Pool Access Room provides direct access to a semi-private lagoon-style swimming pool, from the ground floor terrace surrounded by tropical nature.	53 m ²	5	5	10
Wana 2BR Resort View Room	With a convenient connecting hallway, indulge in a relaxing bath in your marble bathroom, framed by floor-to-ceiling windows and lush greenery.	108 m ²	2 (twin + twin)	2 (twin + king)	4*
Wana 2BR Ocean View Room	Immerse yourself in the luxury of space, a marble bathroom with premium amenities and a connecting hallway.	108 m ²	6 (twin + king)	0	6*
Total			63	57	120

*Refers from the sharing rooms

General Information

Maximum number of guests per bedroom: 3 adults or 2 adults + 2 children under 12 years old

Wheelchair-accessible rooms: 2 rooms available at RIMBA by AYANA Bali and AYANA Resort Bali

All guest rooms and suites are non-smoking. Guests can only smoke on the balcony (ashtrays available on request).

Breakfast venues: Padi Restaurant (AYANA Resort: International buffet); To'Ge Restaurant: RIMBA (International Buffet); Dava: Villa (À la carte menu), Karang Restaurant: AYANA Segara (Global comfort food)

Grand Total	403
--------------------	------------

AYANA Resort Bali

ROOM CATEGORY	DESCRIPTION	SIZE (m ²)	# of twin beds	# of king-size beds	Total # of rooms
Resort View Room	Refresh your holiday mood by checking into AYANA Resort's newly renovated room.	52 m ²	27	36	63
Jimbaran Bay Room	Enjoy a memorable holiday experience with traditional Balinese touches throughout spacious interiors and a private balcony with garden and Ocean Views.	52 m ²	14	17	31
Ocean View Room	Take in sweeping views of tropical gardens and the Indian Ocean from this upgraded room with classic Balinese nuances and marble ensuite bathroom.	52 m ²	71	113	184
Ocean View Suite	Perfect for VIPs, special celebrations, and unforgettable vacations, the suite features a private balcony, spacious living area, luxurious master bedroom and two marble ensuite bathrooms.	110 m ²	1	15	16
2BR Resort View Room	Elegantly appointed indoor connecting rooms feature opulent marble flooring and spa-inspired bathrooms, with views of the lush tropical gardens.	104 m ²	6 (twin + king)		6
2BR Ocean View Room	With breathtaking ocean views, the indoor connecting rooms artfully combine Balinese heritage with contemporary comfort, making them ideal for memorable VIP stays.	104 m ²	5 (twin + king)		5
2BR Ocean View Suite	Enjoy stunning Indian Ocean views from the expansive and opulent suite with marble bathrooms and private balconies.	162 m ²	13 (twin + king)		13
Total			114	180	294

*Refers from the sharing rooms

AYANA Segara Bali

ROOM CATEGORY	DESCRIPTION	SIZE (m ²)	# of twin beds	# of king-size beds	Total # of rooms
Resort View Room	Handcrafted furnishings by local artisans capture the island's spirituality, while a private terrace opens up to the lush, tropical gardens.	58 m ²	31	54	85
Jimbaran Bay Room	A private terrace opens up to breathtaking panoramic ocean views — one of the best viewpoints in the entire resort.	65 m ²	12	15	27
Ocean View Room	A private terrace opens up to our breathtaking panoramic ocean view- one of the best in the resort.	65 m ²	31	42	73
Resort View Suite	Experience extraordinary tropical living with this spacious indoor-outdoor suite with a separate living room. Ideal for guests traveling with family or friends, or for those who simply desire more space.	93 m ²	6	6	12
Two Bedroom Ocean View Room	Indulge in the luxury of space and surround yourself with nature in this ocean view, featuring two adjacent rooms connected by a shared entrance.	130 m ²	2 (twin + king)	18 (twin + twin)	20*
One Bedroom Ocean View Residence	Wake up to ocean views in this spacious 1-bedroom residence, ideal for couples or small families. Enjoy a fully equipped kitchen, in-unit laundry, and open-plan living with Balinese charm.	80 m ²	-	14	14
Two Bedroom Ocean View Residence	Surrounded by temple-inspired gardens, this serene retreat offers ocean views, a private garden, and spacious living for families or couples. Enjoy a full kitchen, in-unit laundry, and a versatile den.	130 m ²	8 (king+king/queen/single)		8
Two Bedroom Ocean View Residence with Pool	This spacious 2-bedroom residence with a private pool, sun deck, and garden is perfect for families or couples. It features open-plan living, a full kitchen, den, in-unit laundry, and shaded terrace.	217 m ²	4 (king+king/queen)		4
Total			103	94	223

*Refers from the sharing rooms

AYANA Villas Bali

ROOM CATEGORY	DESCRIPTION	SIZE (m ²)	# of twin beds	# of king-size beds	Total # of rooms
One Bedroom Ocean View Villa	Feel the harmony of Bali's relaxing natural scenery from this Balinese-style villa with private pool, opulent interiors, and spectacular Indian Ocean views.	500 m ²	6	41	47
One Bedroom Oceanfront Villa	A stand-alone residence with plush Balinese-style interiors, private landscaped garden with contemporary pool, inspiring garden, and ocean views.	500 m ²	-	15	15
Two Bedroom Ocean View Villa	Gracious private residence with two ample bedrooms, elegant living area, indulgent marble bathrooms, and an expansive garden with pool and dining gazebo.	400 m ²	5 (twin + king)		5
Two Bedroom Oceanfront Villa	Inspired by Bali's distinctive royal heritage, this two bedroom villa showcases modern island architecture, five-star amenities, pool and a luxurious pool and breathtaking ocean views.	530 m ²	5 (twin + king)		5
The AYANA Villa	Our 3,000 m ² The AYANA Villa presents a once-in-a-lifetime experience to luxuriate in one of Asia's most opulent properties.	3000 m ²	1 (1 twin + 2 king)		1
Grand Total of Rooms Across 4 Properties:			TWIN 443	KING 550	Total: 993
			Total		73

Venue Configuration

AYANA Venues

Function Venue	Location	Measurements (meters)	Height* (meters)	Venue Size (sqm)	Maximum capacity (pax)					
					Reception	Theater	U-Shape	Classroom	Round Table	Hollow Square
Amara Ballroom	Indoor AYANA Lobby Level	31.2 X 18	6.4	570	670	670	93	288	320	132
Amara 1	Indoor AYANA Lobby Level	9.6 X 18	6.4	174	210	224	57	108	80	66
Amara 2	Indoor AYANA Lobby Level	12.0 X 18	6.4	222	260	270	60	135	150	72
Amara 3	Indoor AYANA Lobby Level	9.6 X 18	6.4	174	210	224	57	108	80	66
Mandala 1	Indoor AYANA Lobby Level	13.2 X 8.6	3.3	114	130	120	33	54	60	42
Mandala 2	Indoor AYANA Lobby Level	13.2 X 8.6	3.3	114	130	120	33	54	60	42
Mandala 3	Indoor AYANA Lobby Level	13.2 X 8.6	3.3	114	130	120	33	54	60	42
Mandala 2&3	Indoor AYANA Lobby Level	13.2 X 17.1	3.3	228	265	240	48	126	120	72
Amara Courtyard	Outdoor AYANA Lobby Level	21 x 24	-	350	200	-	-	-	200	-
Batur	Indoor AYANA Lobby Level	12.9 X 9.0	3.3	110	120	126	33	60	60	48
Batur 1	Indoor AYANA Lobby Level	6.1 X 9.0	3.3	55	60	56	24	24	30	30
Batur 2	Indoor AYANA Lobby Level	6.1 X 9.0	3.3	55	60	56	24	24	30	30
Bratan	Indoor AYANA Lobby Level	7.3 X 7.5	3.3	55	60	60	24	27	30	30
Karang Mas	Indoor AYANA Lobby Level	10.0 X 5.5	3.3	55	Boardroom: 16					
AYANA Villa Function Room	Indoor AYANA Lobby Level	3.6 X 14.6	--	52	50	30	--	--	--	--
AYANA Villa Lawn	Outdoor / Oceanfront	30.9 X 17.5	--	540	600	--	--	--	200	--
Champa Garden	Outdoor / Garden	57 X 50	--	2,850	3,000	--	--	--	950	--
SKY Deck	Outdoor / Oceanfront	13.5 X 4.7	--	65	80	80	--	--	30	--
SKY Middle Lawn		50 X 18		900	1000	--	--	--	700	--
SKY Lower Lawn		46.7 X 12.2		570	650	--	--	--	300	--
SKY Amphitheater		13.3 X 11.6		120	182	180	--	--	40	--
Asmara	Outdoor / Ocean View	10 X 10	--	100	110	--	--	--	50	--
Bale Kencana	Outdoor / Oceanfront	14.4 X 7.8	--	115	130	--	--	--	30	--
Vista	Outdoor	60 X 15	--	900	600	--	--	--	450	--
SAKA Garden	Outdoor	70 X 10	--	700	800	--	--	--	350	--
SAKA VIP Room	Indoor	8.4 X 3.9	3.2	31	--	--	--	--	--	10
Tevana – Plaza	Outdoor	40 X 20	--	800	1,000	--	--	--	550	--
Tevana – Function Area	Outdoor	--	--	2,270	1,000	--	--	--	650	--

* Height until ceiling lights

RIMBA Venues

Function Venue	Location	Measurements (meters)	Height* (meters)	Venue Size (sqm)	Maximum capacity (pax)					
					Reception	Theater	U-Shape	Classroom	Round Table	Hollow Square
RIMBA Ballroom	Indoor RIMBA Lobby Level	14.2 X 23.6	4.8 (2.8)	335	420	432	72	240	240	102
RIMBA Salon 1	Indoor RIMBA Lobby Level	14.2 X 11.8	4.8 (2.8)	168	216	216	54	84	120	66
RIMBA Salon 2	Indoor RIMBA Lobby Level	14.2 X 11.8	4.8 (2.8)	168	216	216	54	84	120	66
Ulin	Indoor RIMBA Lobby Level	7.8 X 6.0	5.25 (3)	47	40	40	30	24	30	24
Cendana	Indoor RIMBA Lobby Level	9.0 X 7.6	5.25 (3)	68	50	60	33	24	30	25
Kayu Manis Rooftop	Rooftop RIMBA 5th floor	15.30 X 22.24	6.8	340	Seated Buffet 250					
RIMBA Lawn	Outdoor / Garden	45 X 21	---	1500	1000	---	---	---	500	---

* height till ceiling lights

AYANA & Segara F&B Outlet

Outlet	Existing Capacity
Padi Restaurant	240
Pavilion 2	28
Pavilion 3	38
Pavilion 4	30
Pavilion 5	40
Damar Terrace	78
Pavilion 1	20
Pavilion 2	12
Pavilion 3	8
Courtyard	48
KISIK Bar & Grill	112
KISIK Pier	80
Kubu	120
Dava Steak & Seafood	100
Private Dining Room 2	12
Private Dining Room 3	10
Wine Lounge	16
Scusa sections 3-6	80

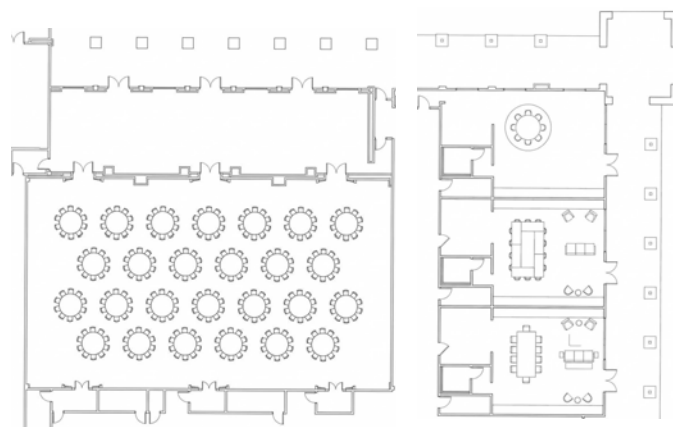
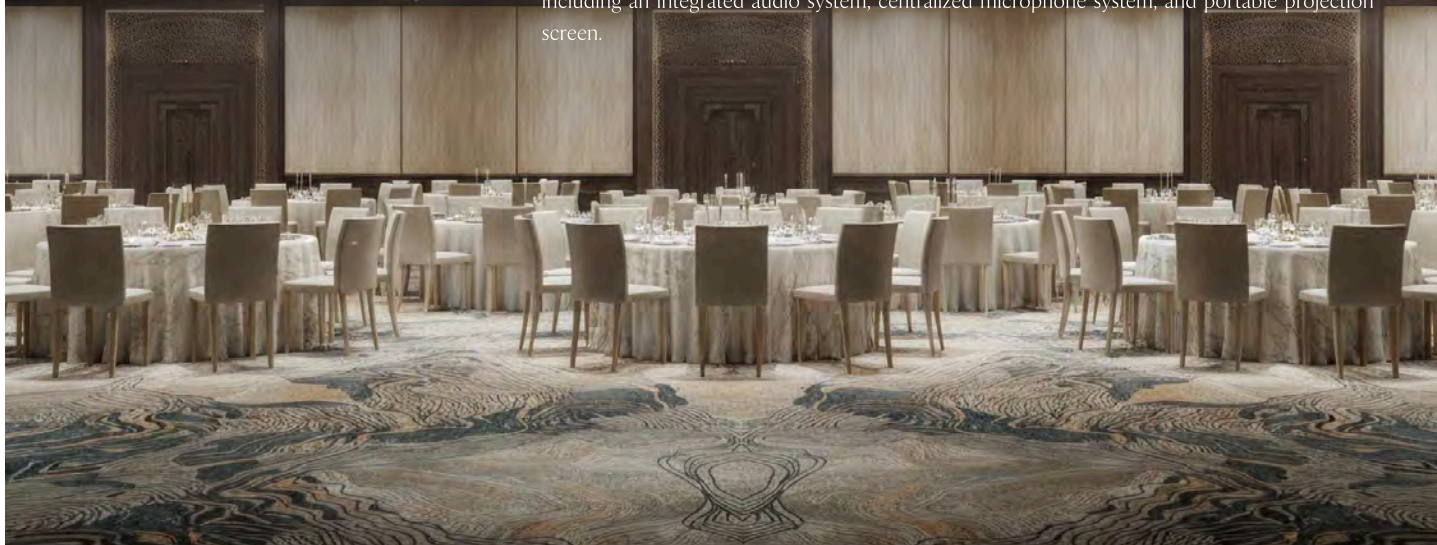
Outlet	Existing Capacity
Sami Sami	195
Pavilion 2	44
Pavilion 3	15
Pavilion 4	12
Pavilion 5	44
Pavilion 6	40
Pavilion 7	40
Karang Restaurant	194
Luna Rooftop Bar	68
Scusa	184
SAKA Cafe	20
Sumizen	52
Honzen	70

RIMBA by AYANA F&B Outlets

Outlet	Existing Capacity
Kampoeng Bali	250
Section 1	44
Section 2	65
Section 3	55
Section 4	44
Section 5	42
UNIQUE Rooftop Bar	140
1st Floor	80
Mezzanine	60
To'Ge Restaurant	240
Indoor	192
Outdoor	48
Orchid	72
Tea Lounge	22
Glass House	30
Cooking Class	20

Amara Ballroom

The elegant Amara Ballroom has an area of 570 sqm with maximum capacity of up to 680 guests for cocktail receptions. Situated next to beautiful tropical gardens just off the main lobby, Jimbaran Amara Ballroom hosts an exciting range of event functions, from formal parties and private indoor dinners to full-scale exhibitions and international conferences. The venue can be divided into three separate rooms depending on requirements, with 3 breakout rooms available for flexible arrangements. Jimbaran Amara Ballroom provides the latest conferencing technology, including an integrated audio system, centralized microphone system, and portable projection screen.



Amara Ballroom

Function Venue	Location	Measurements (meters)	Height* (meters)	Venue Size (sqm)	Maximum capacity (pax)					
					Reception	Theater	U-Shape	Classroom	Round Table	Hollow Square
Amara Ballroom	Indoor AYANA Lobby Level	31.2 X 18	6.4	570	670	670	93	288	320	132
Amara 1	Indoor AYANA Lobby Level	9.6 X 18	6.4	174	210	224	57	108	80	66
Amara 2	Indoor AYANA Lobby Level	12.0 X 18	6.4	222	260	270	60	135	150	72
Amara 3	Indoor AYANA Lobby Level	9.6 X 18	6.4	174	210	224	57	108	80	66
Mandala 1	Indoor AYANA Lobby Level	13.2 X 8.6	3.3	114	130	120	33	54	60	42
Mandala 2	Indoor AYANA Lobby Level	13.2 X 8.6	3.3	114	130	120	33	54	60	42
Mandala 3	Indoor AYANA Lobby Level	13.2 X 8.6	3.3	114	130	120	33	54	60	42
Mandala 2&3	Indoor AYANA Lobby Level	13.2 X 17.1	3.3	228	265	240	48	126	120	72
Amara Courtyard	Outdoor AYANA Lobby Level	21 X 24	-	350	200	-	-	-	200	-

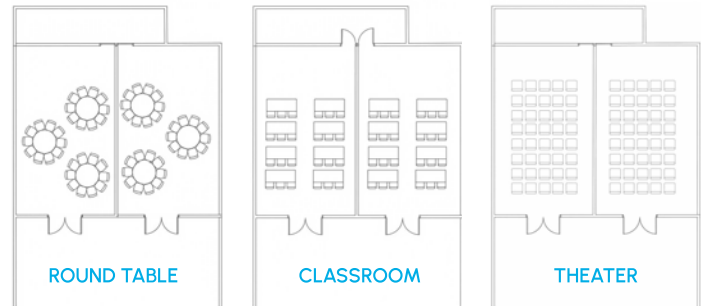
* height till ceiling lights

Batur



Batur accommodates up to 120 guests for receptions. It can be divided into 2 separate rooms according to group requirements. Batur is located close to AYANA's Main Lobby surrounded by tranquil gardens. It provides the latest conferencing technology, including 2 projection screens, integrated audio system, and centralized microphone system. Two built-in speakers are mounted on the ceiling to offer clear sound while making an efficient use of space.

Layout by Style

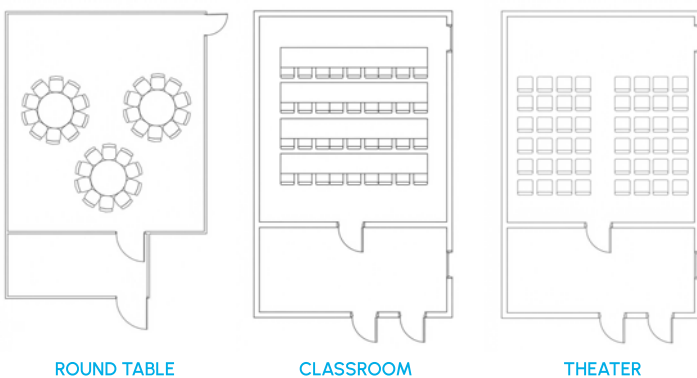


Function Venue	Location	Measurements (meters)	Height* (meters)	Room Size (sqm)	Maximum Capacity (pax)					
					Reception	Theater	U-Shape	Classroom	Round Table	Hollow Square
Batur	Indoor AYANA Lobby Level	12.9 X 9.0	3.3	110	120	126	33	60	60	48
Batur 1	Indoor AYANA Lobby Level	6.1 X 9.0	3.3	55	60	56	24	24	30	30
Batur 2	Indoor AYANA Lobby Level	6.1 X 9.0	3.3	55	60	56	24	24	30	30

*height until ceiling lights

Bratan

Bratan is located just off the Main Lobby surrounded by tranquil gardens. Bratan accommodates up to 60 guests for cocktail receptions and up to 36 guests in classroom style. The venue makes the perfect space for private dinners or corporate seminars. Bratan provides the latest conferencing technology, including a projection screen, integrated audio system, and centralized microphone system. Two built-in speakers, which are mounted on the ceiling, ensure clear sound quality and efficient use of space.



Function Venue	Location	Measurements (meters)	Height* (meters)	Venue Size (sqm)	Maximum Capacity (pax)					
					Reception	Theater	U-Shape	Classroom	Round Table	Hollow Square
Bratan	Indoor AYANA Lobby Level	7.3 X 7.5	3.3	55	60	60	24	27	30	30

*height until ceiling lights

Karang Mas Boardroom

Karang Mas is an elegant boardroom seating up to 16 guests comfortably around a long polished timber table for small meetings. Karang Mas is located within the business center and can host everything from sales presentations to video-conferences. Karang Mas provides the latest conferencing technology, including a motorized projection screen available at the press of a button integrated audio system, and centralized microphone system.

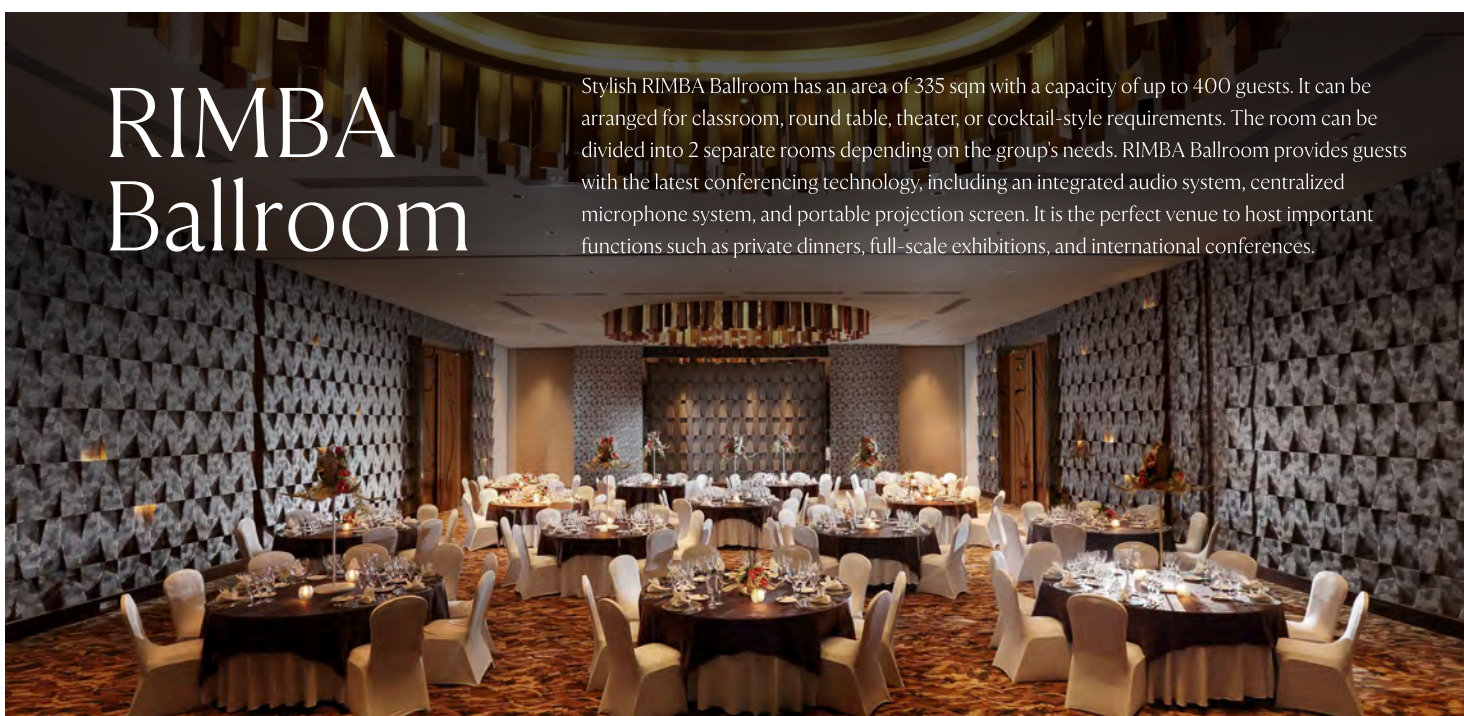


Venue Name	Location	Measurements (meters)	Height* (meters)	Venue Size (sqm)	CAPACITY (PAX)*
Karang Mas	Indoor AYANA Lobby Level	5.5 X 10.0	3.3	55	Boardroom: 16

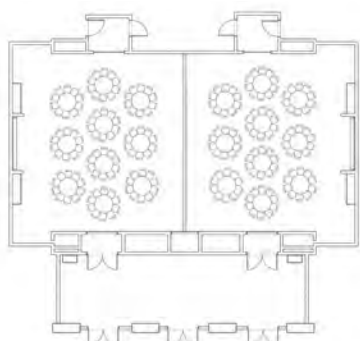
* Reception Theater U-Shape Classroom Round Table Hollow Square

RIMBA Ballroom

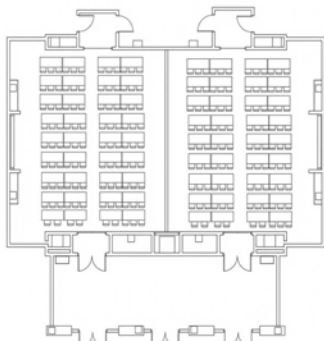
Stylish RIMBA Ballroom has an area of 335 sqm with a capacity of up to 400 guests. It can be arranged for classroom, round table, theater, or cocktail-style requirements. The room can be divided into 2 separate rooms depending on the group's needs. RIMBA Ballroom provides guests with the latest conferencing technology, including an integrated audio system, centralized microphone system, and portable projection screen. It is the perfect venue to host important functions such as private dinners, full-scale exhibitions, and international conferences.



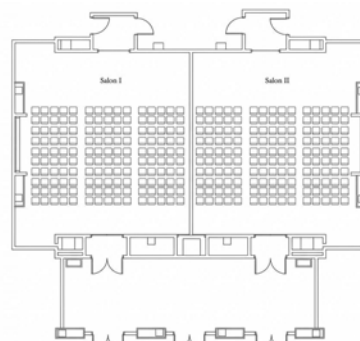
Layout by Style



ROUND TABLE



CLASSROOM



THEATER

Function Venue	Location	Measurements (meters)	Height* (meters)	Venue Size (sqm)	Maximum capacity (pax)					
					Reception	Theater	U-Shape	Classroom	Round Table	Hollow Square
RIMBA Ballroom	Indoor RIMBA Lobby Level	14.2 X 23.6	4.8 (2.8)	335	420	432	72	240	240	102
RIMBA Salon 1	Indoor RIMBA Lobby Level	14.2 X 11.8	4.8 (2.8)	168	216	216	54	84	120	66
RIMBA Salon 2	Indoor RIMBA Lobby Level	14.2 X 11.8	4.8 (2.8)	168	216	216	54	84	120	66

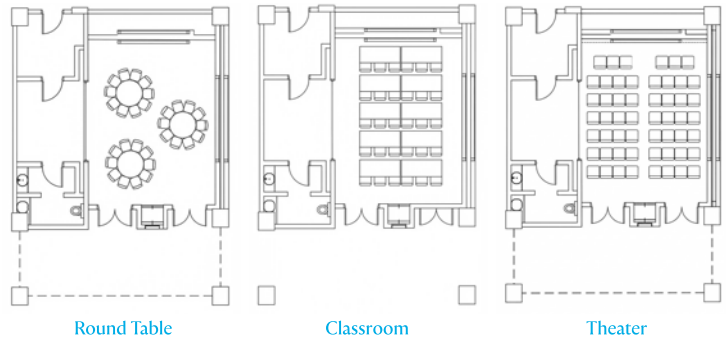
* height until ceiling lights

Ulin



Ulin is an ideal venue for small to mid-size meetings and gatherings and can accommodate up to 40 guests in theater-style seating. It can also be arranged in various styles to suit your personalized preferences with flexible seating, including U-shape, classroom, round table, or hollow square. Ulin also provides a pantry for convenient coffee breaks. Overlooking beautiful gardens, Ulin is appointed with wide windows to welcome natural light. It features the latest conferencing technology, including an integrated audio system and centralized microphone system.

Layout by Style



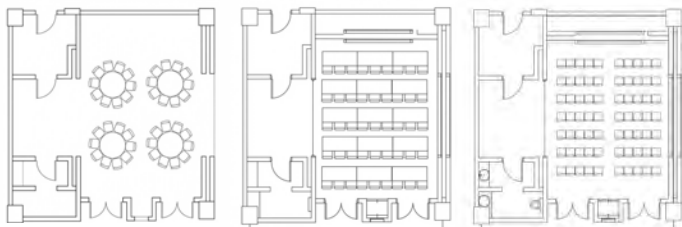
Function Venue	Location	Measurements (meters)	Height* (meters)	Venue Size (sqm)	Maximum capacity (pax)					
					Reception	Theater	U-Shape	Classroom	Round Table	Hollow Square
Ulin	Indoor RIMBA Lobby Level	7.8 X 6.0	5.25 (3)	47	40	40	30	24	30	24

* height till ceiling lights

Cendana

Accommodating up to 50 guests for standing receptions, Cendana can be arranged in various styles and seating, including U-shape classroom, round table, or hollow square. Located in beautiful gardens, Cendana is appointed with wide windows that welcome natural light. It features the latest conferencing technology, including an integrated audio system and centralized microphone system. The venue also features a pantry for convenient coffee breaks.

Layout by Style



Round Table

Classroom

Theater



Function Venue	Location	Measurements (meters)	Height* (meters)	Venue Size (sqm)	Maximum capacity (pax)					
					Reception	Theater	U-Shape	Classroom	Round Table	Hollow Square
Cendana	Indoor RIMBA Lobby Level	9.0 X 7.6	5.25 (3)	68	50	60	33	24	30	25

* height till ceiling lights

Tevana Garden

Connect with Nature

Wander along stunning paths amongst 80+ species of tropical flora. Tevana represents a divine connection to nature, inviting guests to rejuvenate in tranquility while enjoying the island's rich biodiversity.

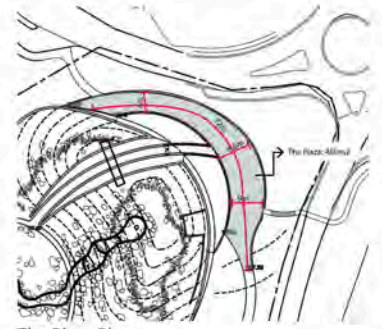
With a 3,200 sqm outdoor space for up to 1,000 guests, Tevana is ideal for weddings and corporate events. Designed by renowned architects Kazuma Hasegawa and Maiko Shiromizu, it harmoniously blends Balinese charm with Japanese landscaping.

Venue	Location	Venue Size (sqm)	Reception	Round Table
Tevana - Plaza	Outdoor	800	1,000	—
Tevana - Function Area	Outdoor	2270	1,000	650





Tevana Garden Plan



The Plaza Plan



The Function Lawn Plan

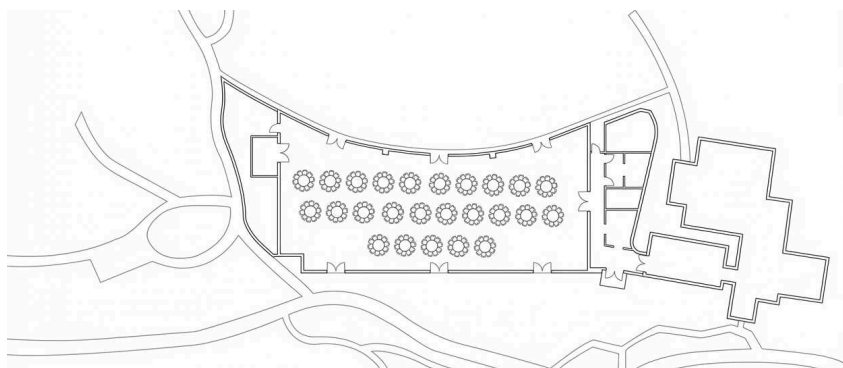
Located within RIMBA by AYANA Bali, RIMBA Lawn is an expansive outdoor venue. A generous 618 sqm in size, it is a tropical oasis for elegant outdoor dinners under the stars. Surrounded by beautiful tropical trees and courtyards, RIMBA Lawn is an ideal venue for private parties or themed events for up to 1,000 guests. Adjoining Orchid Tea Lounge and Cooking School, this special location will make your function even more unique and memorable.

RIMBA Lawn



Venue	Location	Measurements (meters)	Height* (meters)	Venue Size (sqm)	Maximum capacity (pax)					
					Reception	Theater	U-Shape	Classroom	Round Table	Hollow Square
RIMBA Lawn	Outdoor Garden	45 X 21	—	1,500	1,000	—	—	—	500	—

Layout by Style



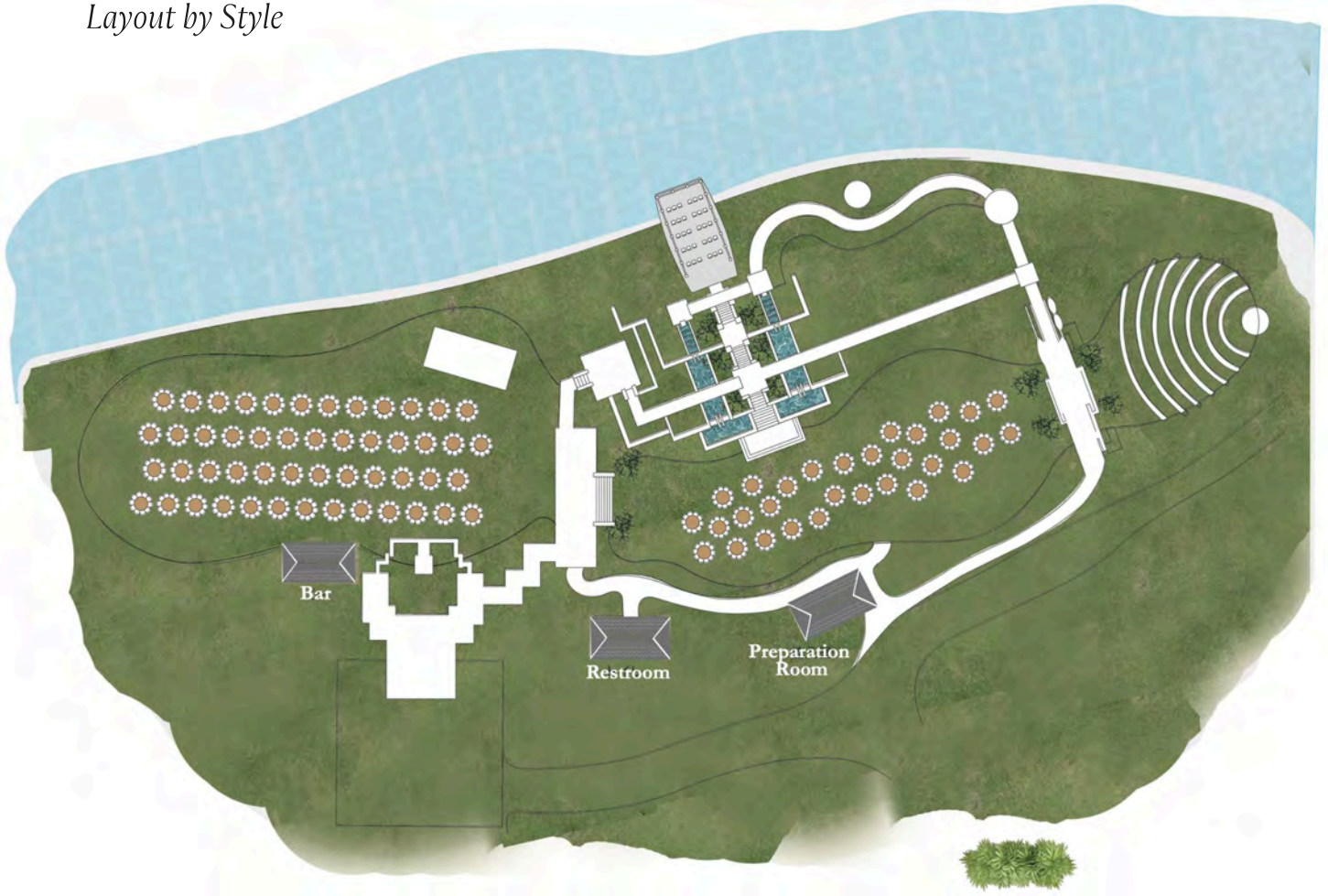
SKY

SKY is a spectacular oceanfront venue for corporate functions and grand events under the stars. Situated within an exclusive clifftop location above AYANA's secluded Kubu Beach, SKY guests enjoy 180-degree ocean and sunset views. This 7,500 square meter multi-purpose event venue offers maximum privacy and flexibility for event organizers. The dramatic open-air design features ceremonial steps and multi-tiered fountains that ascend to a cantilevered deck extending 3.5 meters out from the cliff, which makes a stunning stage for performances that seemingly float above the ocean.

This is one of AYANA's premier outdoor venues for group dinners, presenting an experience that will be cherished by all attendees for years to come. With total capacity for up to 1,100 guests for a standing reception, SKY includes 2 outdoor reception lawns at the cliff's edge, an open-air theater, preparation villa for VIPs and event hosts, and a bridge that doubles as both a stage for entertainment and wheelchair access.



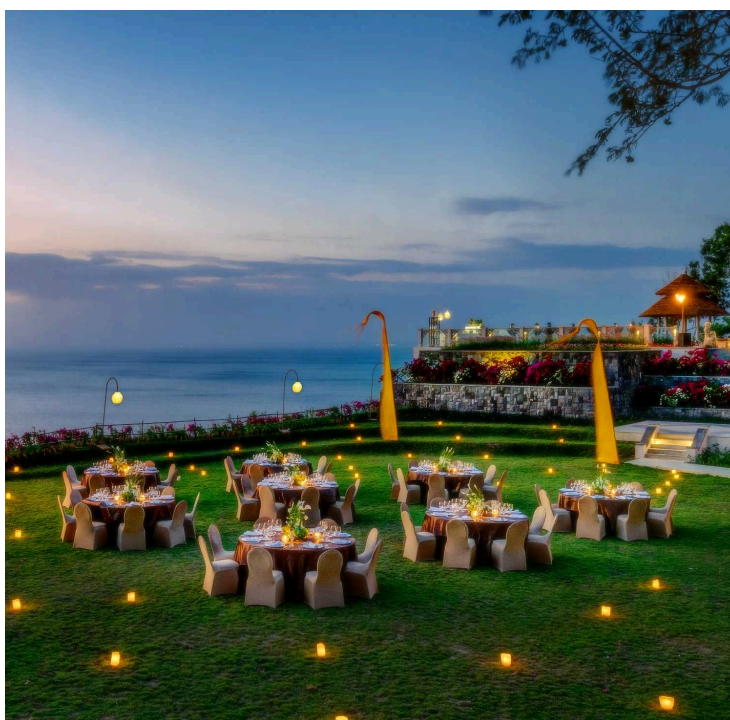
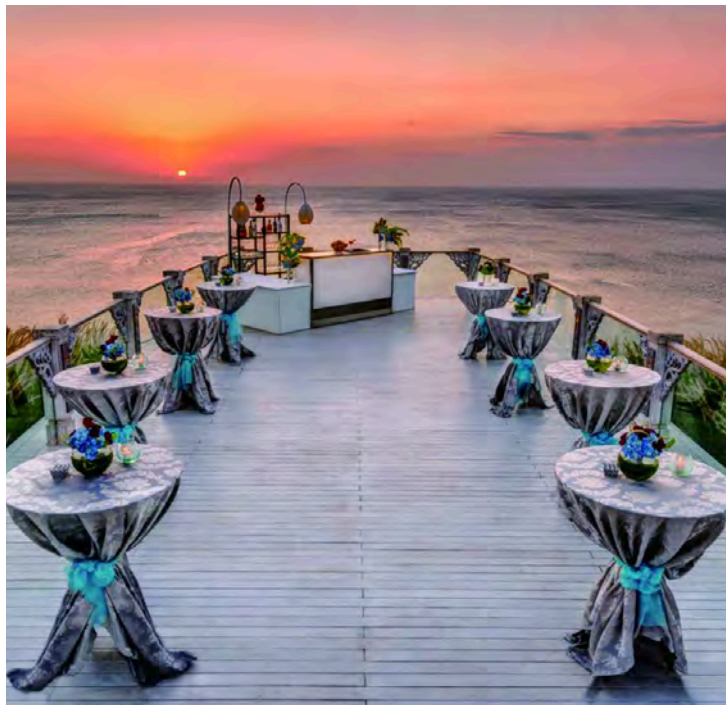
Layout by Style



Venue	Location	Venue Size (sqm)	Maximum Capacity (pax)					
			Reception	Theater	U-Shape	Classroom	Round Table	Hollow Square
SKY Deck	Outdoor / Oceanfront	65	80	80	-	-	30	-
SKY Middle Lawn	Outdoor / Oceanfront	900	1,000	-	-	-	700	-
SKY Lower Lawn	Outdoor / Oceanfront	570	650	-	-	-	300	-
SKY Amphitheater	Outdoor / Oceanfront	120	182	180	-	-	40	-

SKY Deck

SKY Deck is a unique location that seemingly floats 3.5 meters above the Indian Ocean with breathtaking views melting into the horizon. It is an ideal venue for private cocktail parties, elegant ceremonies, or spectacular photo sessions, providing a memorable experience for participants.



SKY Middle Lawn, SKY Lower Lawn

Sky's Middle Lawn is the venue's main area for events and can accommodate up to 500 guests. It is the perfect choice for grand receptions, with a location that enjoys Bali's famous sunset views. Situated on the way to Sky Deck, Lower Lawn is a great option for casual receptions, stylish fashion shows, and other important occasions.

SKY Amphitheater

SKY Amphitheater is located on the edge of paradise at SKY, cleverly designed to maximize ocean views. Amphitheater is an ideal venue for opening ceremonies, receptions with cultural-themed entertainment, and events that strive to deliver life's most memorable experiences.

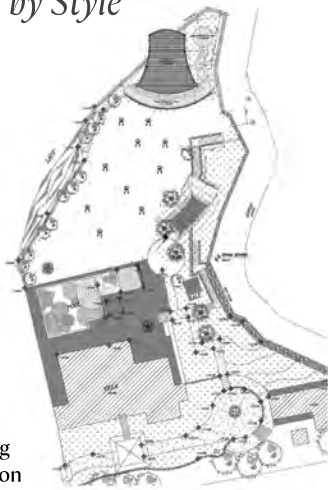


The AYANA Villa

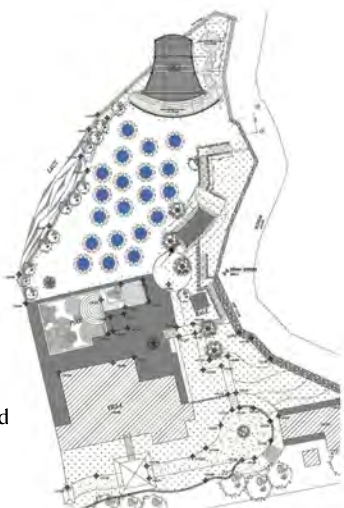
Our 3-bedroom AYANA Villa enjoys panoramic views from its secluded, cliff-edge location. Offering 608 sqm of landscaped tropical gardens, as well as a private swimming pool and Jacuzzi, AYANA Villa accommodates up to 200 guests for seated dinner and 350 guests for standing events. Complete privacy with 180-degree Indian Ocean views from the villa's new Ocean Deck is the ideal location for sunset receptions.

In addition to the deck — designed by leading landscape architecture firm St Legere Design International — guests are invited to make use of the private dining room, cleverly built into the cliff's edge below the deck.

Layout by Style



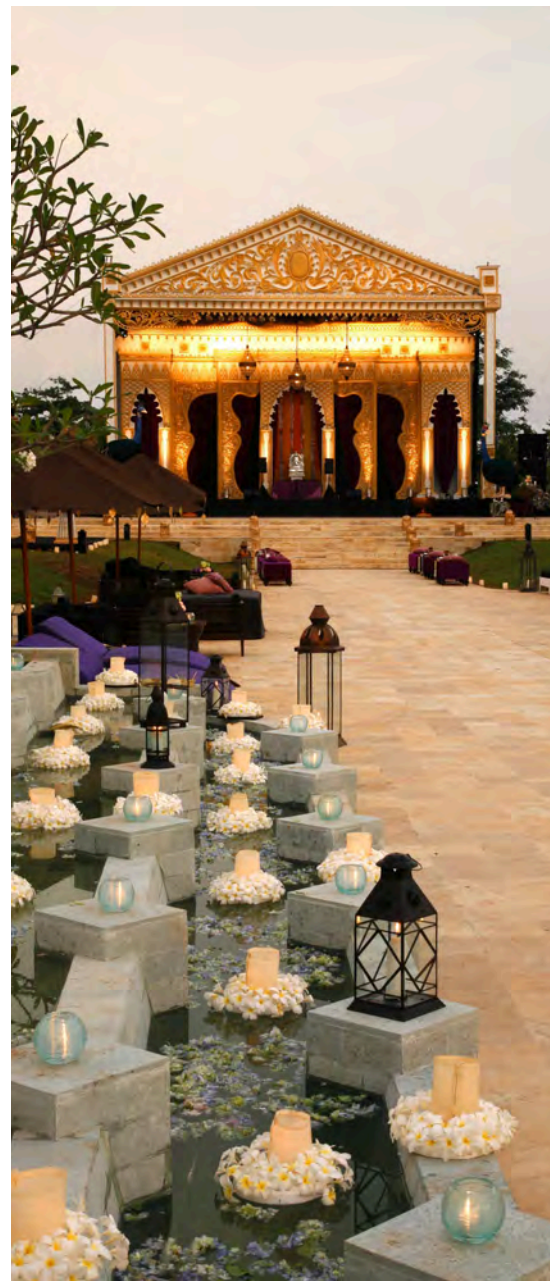
Standing Reception



Round Table

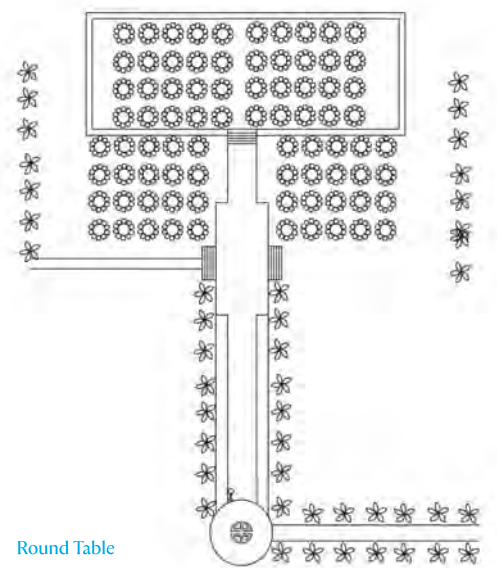


Venue	Location	Measurements (meters)	Height* (meters)	Venue Size (sqm)	Maximum Capacity (pax)					
					Reception	Theater	U-Shape	Classroom	Round Table	Hollow Square
AYANA Villa Lawn	Outdoor/Oceanfront	30.9 X 17.5	---	540	600	---	---	---	200	---
AYANA Villa Function Room	Indoor Oceanfront	3.6 x 14.6	2.5	52	50	30	---	---	---	---
AYANA Villa Deck	Outdoor/ Oceanfront	---	---	---	---	80	---	---	---	---



Champa Garden

Champa Garden is considered the most extensive and well-appointed event venue in Bali, comprising an avant-garde 220,000 sqm, multi-faceted outdoor event space. Wafting with the sweet fragrance of frangipani, the tree-lined main path leads dramatically to a large center stage. The simple yet striking layout can host various functions, such as themed events, grand-scale private functions, international summits, or major conferences. Located in a secluded area with separate entrance and parking, Champa Garden caters for approximately 3,000 guests



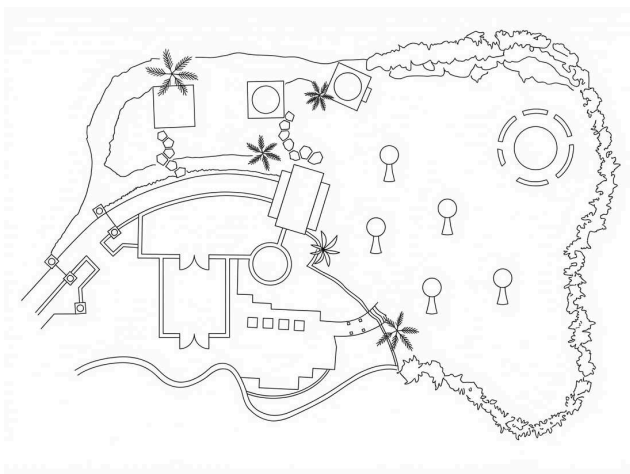
Venue	Location	Measurements (meters)	Height* (meters)	Venue Size (sqm)	Maximum capacity (pax)					
					Reception	Theater	U-Shape	Classroom	Round Table	Hollow Square
Champa Garden	Outdoor	57 X 50	—	2,850	3000	—	—	—	950	—

Asmara

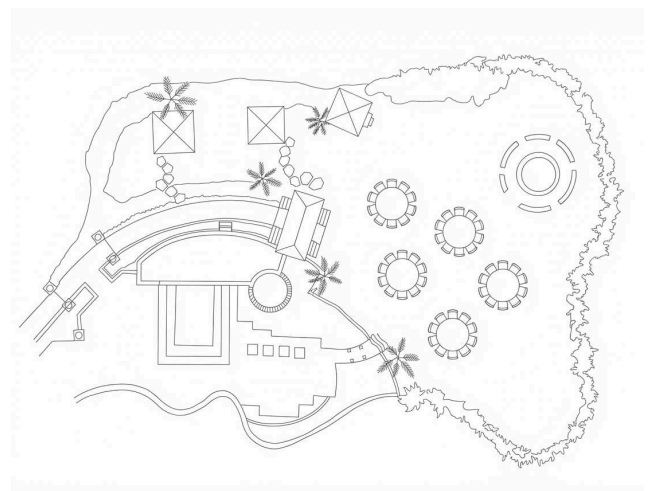
Step into a glorious private garden through an intricately carved wooden gate to find Asmara Gazebo, a 350-year-old joglo, the ceremonial pavilion of an ancient Javanese royal palace.



Layout by Style



Standing Reception



Round Table

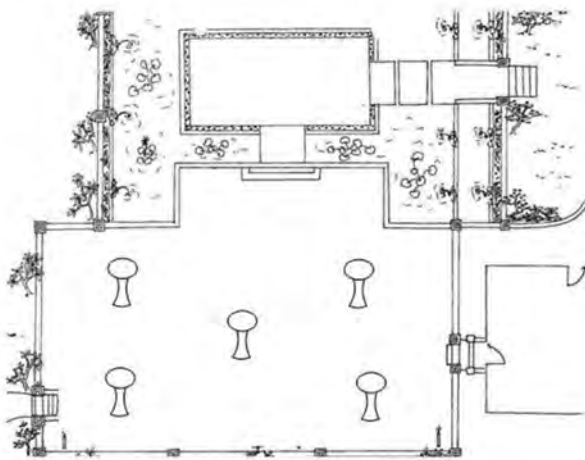
Venue	Location	Measurements (meters)	Height* (meters)	Venue Size (sqm)	Maximum Capacity (pax)					
					Reception	Theater	U-Shape	Classroom	Round Table	Hollow Square
Asmara	Outdoor/ OceanView	10 X 10	—	100	110	—	—	—	50	—

Bale Kencana

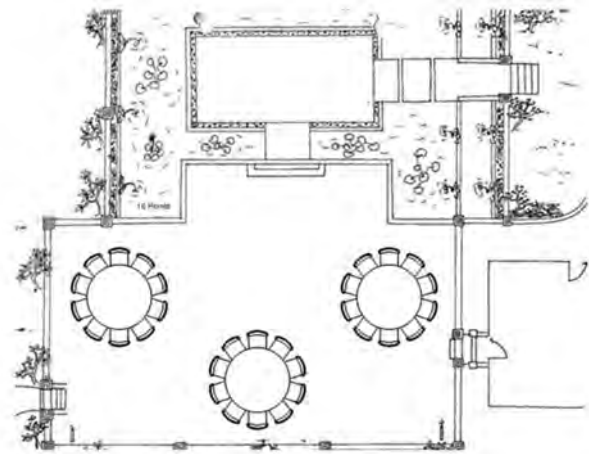
Bale Kencana is an authentic Balinese pavilion. Honoring the island's love of traditional culture and heritage and overlooking 180-degree panoramic ocean views, Bale Kencana accommodates up to 50 guests for standing receptions. It is surrounded by limestone walls with classic volcanic stone floors. This serene venue is an ideal space for intimate gatherings or dinner parties. Traditional Balinese dances performed in the gazebo as an open-air stage during dinner make a memorable event.



Layout by Style



Standing Reception

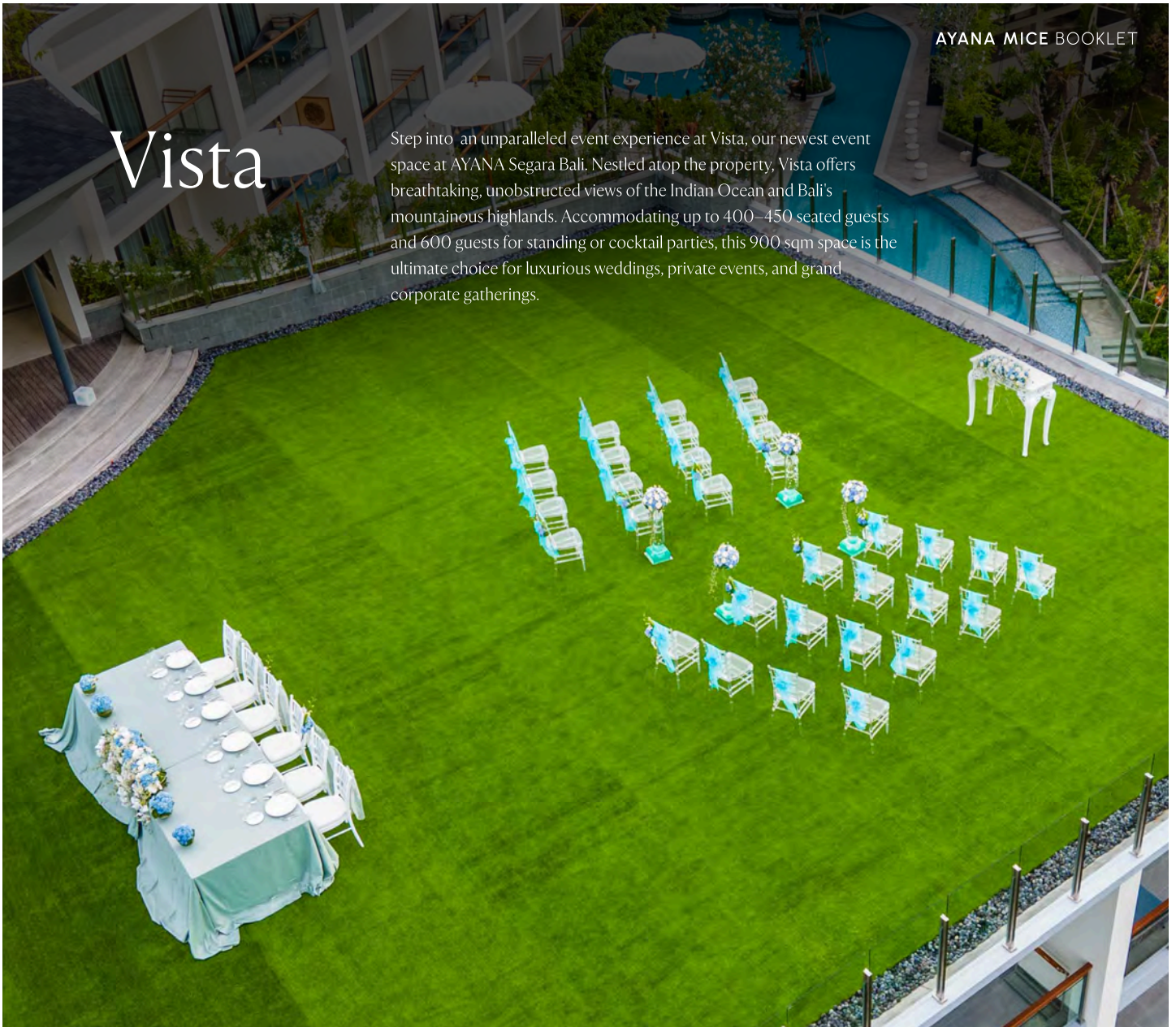


Round Table

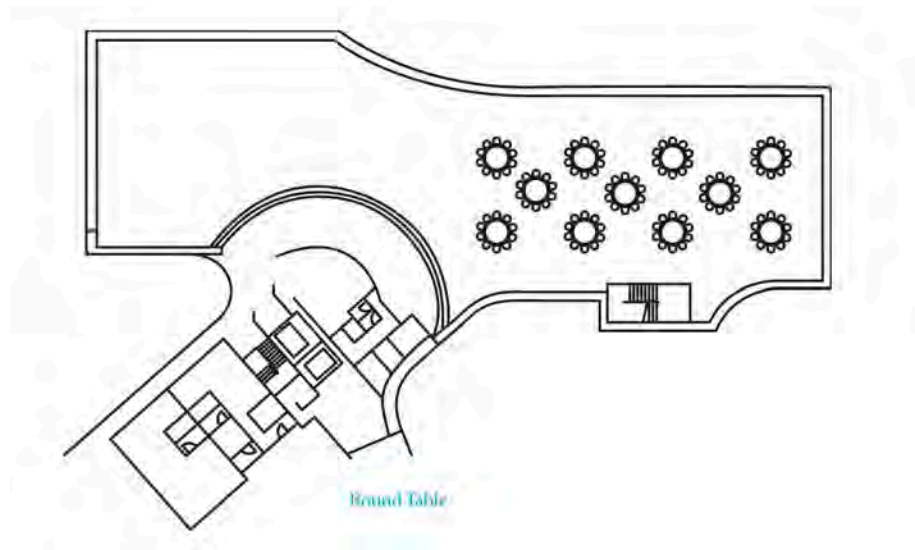
Venue	Location	Measurements (meters)	Height* (meters)	Venue Size (sqm)	Maximum Capacity (pax)					
					Reception	Theater	U-Shape	Classroom	Round Table	Hollow Square
Bale Kencana	Outdoor/ Oceanfront View	14.4 X 7.8	—	115	130	—	—	—	30	—

Vista

Step into an unparalleled event experience at Vista, our newest event space at AYANA Segara Bali. Nestled atop the property, Vista offers breathtaking, unobstructed views of the Indian Ocean and Bali's mountainous highlands. Accommodating up to 400–450 seated guests and 600 guests for standing or cocktail parties, this 900 sqm space is the ultimate choice for luxurious weddings, private events, and grand corporate gatherings.



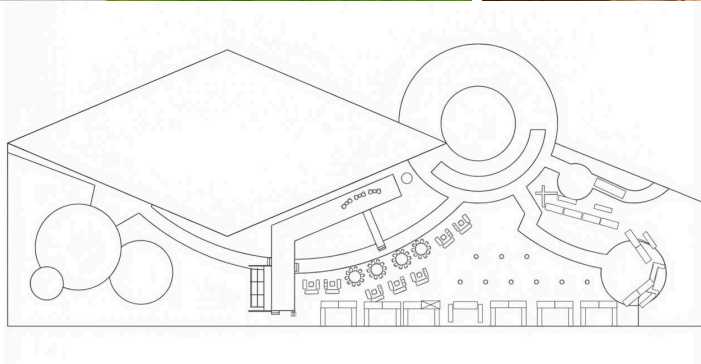
Layout by Style



Venue	Location	Measurements (meters)	Height* (meters)	Venue Size (sqm)	Maximum Capacity (pax)					
					Reception	Theater	U-Shape	Classroom	Round Table	Hollow Square
Vista	Outdoor/Ocean View	—	—	900	600	—	—	—	450	—

SAKA Museum

SAKA Museum celebrates Bali's spiritual and artistic heritage through exhibitions, seminars, and collections. Part of AYANA's commitment to the local community, it was named one of Prix Versailles' World's Most Beautiful Museums 2025, listed among TIME's World's Greatest Places 2024, and received a Kyoto Global Design Award 2024.



SAKA Garden

Situated on the second floor of SAKA Museum, the expansive garden area is a picturesque outdoor oasis ideal for large ceremonies, cocktail receptions, or team-building sessions. Surrounded by the meticulously manicured greenery of AYANA Resort, its tranquil beauty makes SAKA Garden a breathtaking venue for any occasion.

VIP Room

This refined room is ideal for hosting small business meetings with an elegant artistic ambiance. At SAKA Museum, we acknowledge the uniqueness of every event, and our committed team will assist to customize every aspect to align with your distinct requirements. **To inquire about SAKA Museum's event venues, please contact events.bali@ayana.com or +62361702222**

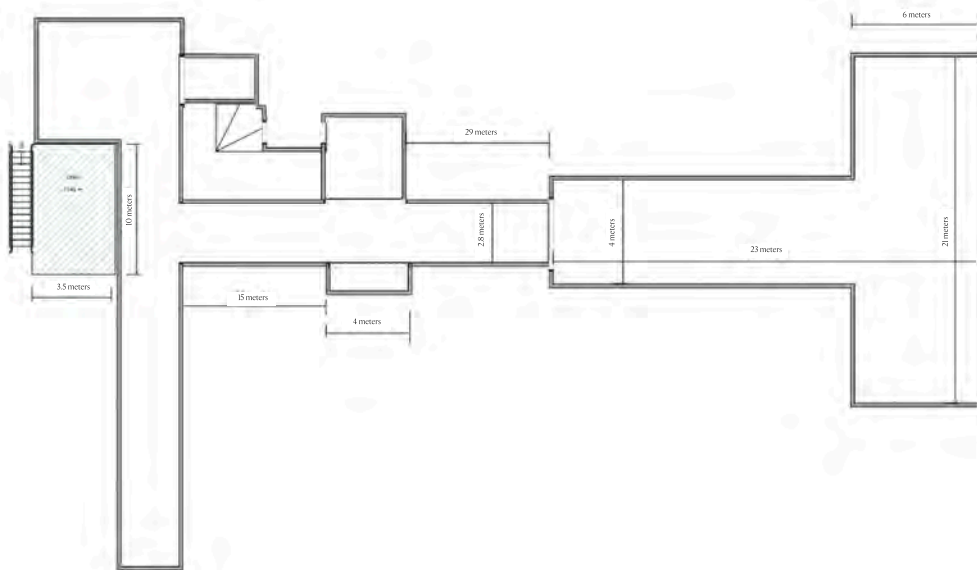
Venue	Location	Measurements (meters)	Height* (meters)	Venue Size (sqm)	Maximum Capacity (pax)					
					Reception	Theater	U-Shape	Classroom	Round Table	Hollow Square
SAKA Garden	Outdoor	70 X 10	-	700	800	-	-	-	350	-
VIP Room	Indoor	8.4 X 3.9	3.2	31	-	-	-	-	-	10

KISIK Pier

For a truly unique event experience surrounded by shimmering seas, AYANA's exclusive KISIK Pier is the only private pier in Bali available for hotel wedding receptions, family gatherings, romantic dinners, and other events based on your needs, including a breathtaking ocean view. Entry to this magical outdoor venue starts with a descent to sea level via AYANA's inclinator, which provides sensational views across the coastline as it traverses the cliff-face to the private beach below. Work with our professional team to personalize your culinary, decorative, and entertainment preferences, and look forward to the sound of ocean waves gently rolling beneath your unforgettable event.



Layout by Style



Venue	Location	Measurements (meters)	Height* (meters)	Venue Size (sqm)	Maximum Capacity (pax)					
					Reception	Theater	U-Shape	Classroom	Round Table	Hollow Square
KISIK Pier	Outdoor	—	—	—	80	—	—	—	80	—

Meeting Packages

AYANA Bali is the ideal destination for your company's MICE goals. Our full and half-day packages for conferences in Bali include your choice of indoor or outdoor venue, standard equipment, and set-up amenities. Personalize your event with a gourmet catering menu for refreshing coffee breaks, tasty lunches, and impressive dinners in one of our exceptional spaces.



All meeting packages include the following standard set-up:

1 x screen (2 x 3 meters)

1 x LCD projector

2 x flip charts

Meeting amenities (notepads, pens, mineral water, mints)

Basic visual sound system (1 x mixer, 2 x portable speaker or built-in speaker, 2 x microphone)

Please refer to the latest price list for details

Half-day Meeting Package

Meeting Room Usage	4 hours
Welcome Coffee Break	1 time
Coffee Break	1 time
Lunch	1 time

Full-day Meeting Package

Meeting Room Usage	8 hours
Welcome Coffee Break	1 time
Coffee Break	2 times
Lunch	1 time

Full-board Meeting Package

Meeting Room Usage	12 hours
Welcome Coffee Break	1 time
Coffee Break	2 times
Lunch & Dinner	1 time each

Coffee Break Meeting Package

Meeting Room Usage	4 hours
Welcome Coffee Break	1 time

Events Settings & Decorations

Customizing Event Venues

In addition to customizing your event with comfortable seating arrangements and stylish decorations, our team is knowledgeable about the latest sound and lighting equipment. Choose a unique theme, such as Bali's unique tropical ambiance, to create a memorable experience.

Event Set-up & Decoration

To create a successful event, the perfect set-up with decorations is one of the most important key factors. Our professional conference team and friendly design team are on hand to personalize your event with inspiring amenities and unique themes that will make your event stand out.

Table Decorations

Our professional designers provide stylish decorations to personalize your event setting with every detail covered, including tablecloths, flower arrangements, and name cards.

Banquet Table Sizes

Round Table	D 183 cm
Long Table (Oblong)	D 183 cm x H 76 cm
Long Table (IBM)	D 183 cm x H 46 cm
Cocktail Table	D 80 cm x H 107 cm
AYANA Stage per Module <i>*Combination of maximum 8 modules</i>	L 183 cm x W 240 cm H 40 cm or 60 cm
RIMBA Stage per Module <i>*available maximum 8 modules combination</i>	L 120 cm x W 240 cm H 40 cm or 60 cm



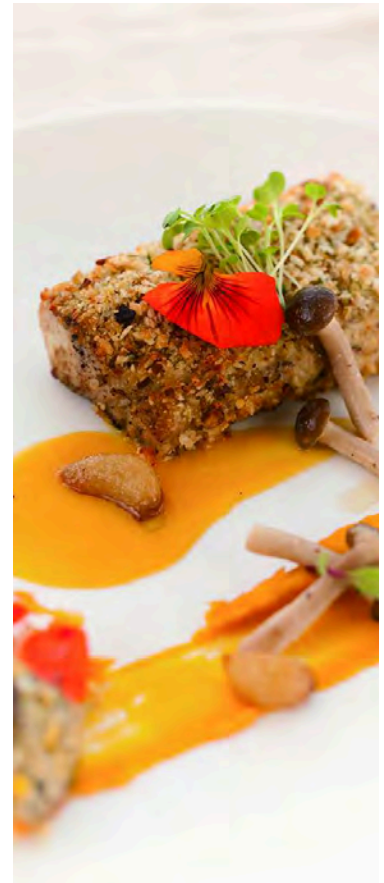
Food Menu

Set Menu

Our culinary team provides one of the island's most delectable multi-course set menu offerings, starting with fresh appetizers and unparalleled main dishes, and ending with irresistible desserts. Each set menu is enhanced by eye-catching presentation to impress every guest. Set menu events are ideal for farewell parties, incentive gatherings, and annual appreciation dinners. Choose from our most popular menus, including Western or Asian, or customize a menu to match your event's theme.

Buffet Menu

Our sumptuous buffet dinner features a delicious range of satisfying appetizers, sophisticated main dishes, and mouthwatering desserts. We invite you to create a menu with your choice of international cuisines, as well as a selection of the island's most popular specialties. Our chefs specialize in Japanese, Chinese, and other Asian cuisines, such as Thai and Indian, to suit your special occasion.



Fire Dance



Fireworks



Legong Dance

Entertainment

AYANA's unique entertainment offerings are designed to enhance guest experiences and maximize special moments for your private party or incentive dinner. We provide a wide variety of impressive entertainment options, including traditional Balinese dance and music performances, fireworks displays, dramatic fire dances, and live jazz bands.

Attractions

- Fireworks
- Pyrotechnics
- Rocket and waterfall fireworks

Modern Dance Performances

- Fire dance
- LED dance
- Water drum

Traditional Balinese Dance

- Kecak (*Chanting and body percussion*)
- Legong (*Graceful court dance with fans*)
- Ramayana (*Epic tale of divine love*)
- Jegog (*Bamboo rhythm performance*)
- Mini Legong (*Short Legong performed by young children*)

International Musical Entertainment

- Acoustic musical performance
- Live band
- DJ

Traditional Balinese Musical Performances

- Baleganjur (*Balinese marching band*)
- Gender performance (*traditional metallophone musical instrument*)
- Rindik performance (*traditional musical instrument made from bamboo*)

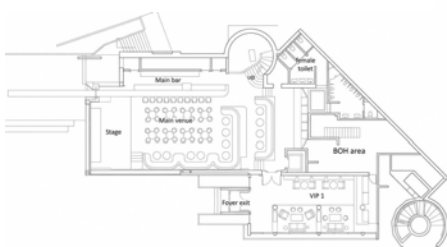
After Rock

Step into After Rock, where elegance and entertainment come together in AYANA Bali's newest venue. Unwind as you enjoy live band and DJ performances on our main stage, or take center stage yourself in the elegant VIP Room for a karaoke experience. Enjoy expertly crafted cocktails, a diverse tapas food menu, and exceptional service in an elegant setting unlike any other in South Bali.

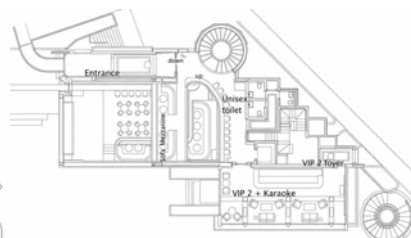


Venue	Seated Capacity (pax)	Standing Capacity	Tables	Sofas	Bar Stools
Ground Floor	102	185	8 tables x 4 guests = 32 guests	6 sofas x 10 guests = 60 guests	10 chairs = 10 guests
Ground Floor VIP	16	50	2 tables x 2 guests = 4 guests	2 sofas x 6 guests = 12 guests	—
Mezzanine Floor	27	30	11 chairs = 11 guests	2 sofas x 6 guests = 12 guests	—
Mezzanine Floor VIP	18	45	—	3 sofas x 6 guests = 18 guests	—
Rooftop Front Bar	33	—	2 tables x 4 guests = 8 guests	2 sofas x 10 guests = 20 guests	5 chairs = 5 guests
Rooftop VIP Outdoor	48	60	2 tables x 4 guests = 8 guests	2 sofas x 10 guests = 40 guests	—
Rooftop VIP	31	50	—	1 sofa x 12 guests = 12 guests	19 chairs = 19 guests

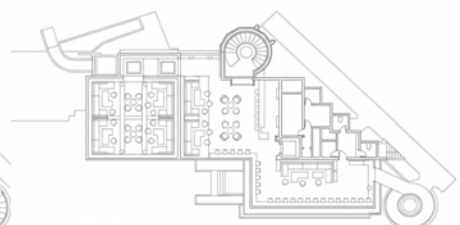
Ground Floor Layout



Mezzanine Layout



Rooftop Layout





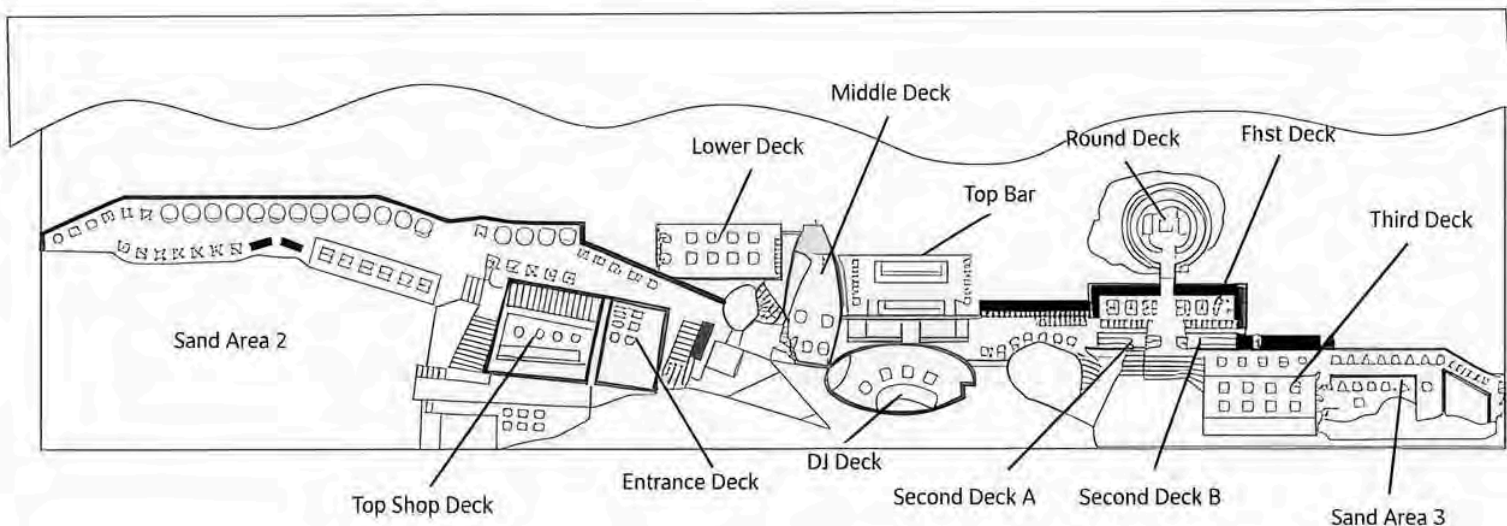
Rock Bar

Perched atop distinctive rock formations along Jimbaran’s pristine sunset coast, Rock Bar is widely respected as one of the globe’s most popular sunset, cocktail, and entertainment venues. Showcasing unparalleled views from 14 meters above the Indian Ocean, Rock Bar is accessible via 2 dramatic cliffside incliners as well as stairs that pass by our famous Ocean Beach Pool. Featuring a glamorous sunset vibe, and a seductive after-dark ambience, listen to premier international DJs as they heighten your experience from a distinctive DJ venue located on the stunning Round Deck.

Rock Bar accommodates over 750 guests to enjoy the scene, with a wide variety of terraced deck seats and tables. Guests from all over the world are welcome from 16:00 every afternoon, while in-house resort guests receive exclusive priority access as a VIP perk. After the sun slips beneath the horizon, Rock Bar begins serving a tantalizing Mediterranean seafood dinner under the stars.

Rock Bar is now accepting deck reservations to accommodate your choice of favorite deck area, promising the perfect oceanfront destination for unforgettable gatherings, cozy private parties with friends, and spectacular MICE events.

Dress Code	Smart attire is required at all times. No singlets, board shorts, or alcohol-branded attire are permitted. For security reasons, large bags and backpacks are not permitted at Rock Bar.
Operating Hours	Sunset & Bar: 4 PM–12 AM
Seating Capacity	750 guests
Food Type	Greek and Mediterranean
Famous for	Sunset Cocktails & Dinner

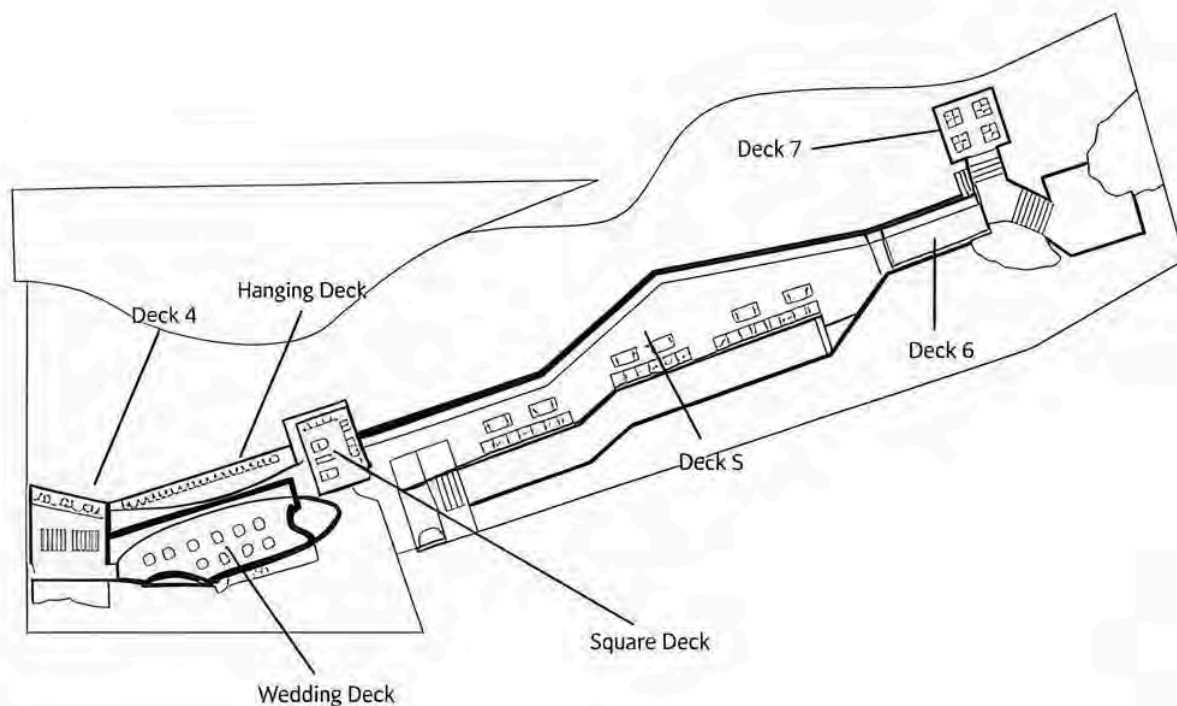


Venue	Maximum # of Guests		Deck Seat Booking Available	Dinner Seating (pax)
	Seating	Standing		
Top Bar	52	70	△	—
Lower Deck	32	50	○	—
Entrance Deck 1	20	32	○	12
Entrance Deck 2	28	45	○	16
Sand Area 1	26	40	○	—
Sand Area 2	38	80	○	—
Middle Deck	19	40	○	24
DJ Deck	—	—	○	—
Cave	32	50	○	—
First Deck	48	60	○	48
Second Deck A	8	—	○	8
Second Deck B	12	—	○	12
Third Deck	47	70	○	47
Round Deck	36	60	△	36
Sand Area 3	29	50	○	—
Deck 4	20	30	○	—
Wedding Deck	41	70	○	—
Hanging Deck	30	—	○	—
Square Deck	22	30	○	—
Deck 5	85	150	○	—
Deck 6	24	25	○	—
Deck 7	16	30	○	—

△: We do not accept full deck reservations during sunset time. We only accept full deck reservations from 9pm onwards.

DECK AREA	Maximum # of Guests		Deck Area Reservation
	Seating	Standing	
Half Rock Bar 1	234	330	○
Half Rock Bar 2	275	350	○
Half Rock Bar 3	250—300	400	○
Rock Bar Exclusive (whole area)	750	1000	△

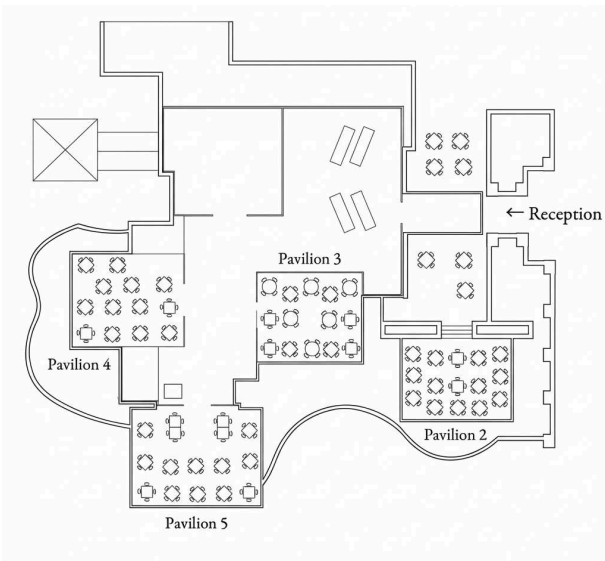
△: We do not accept full deck reservations during sunset time. We accept full space reservations 21:00 onward. Please note that we do not provide an exclusive entertainment option





Padi

Experience cosmopolitan Asian dining in an enchanting Bali setting at Padi. Four open-air thatched-roof pavilions and a lively Asian heritage-style display kitchen, guests can watch native Indonesian, Indian, and Thai chefs working alongside each other to prepare favorite dishes from their respective home countries. Surrounded by lotus ponds reminiscent of rice fields, Padi is an ideal venue for group dinners and lunches throughout your business meeting itinerary. Padi also serves daily buffet breakfast offering European, American, Thai, Japanese, Chinese, and Indonesian specialties.



Operating Hours
 Breakfast: 6:30 AM—10:30 PM
 Dinner: 6:30 —11 PM
 Last order: 10:30 PM

Seating Capacity
 Breakfast: 240 guests
 Dinner: 130 guests

Cuisines
 Thai, Indian

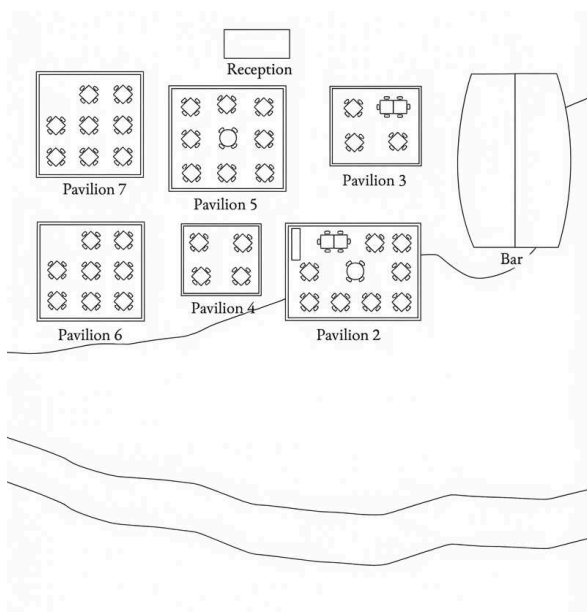
Famous for
 Buffet breakfast and Asian cuisine





Sami Sami

Overlooking AYANA Bali's stunning Indian Ocean vistas from the cliff-edge lawn, Sami Sami specializes in trattoria-style Italian cuisine, presented in a stylish open-air restaurant. Sami Sami provides rustic Italian dishes such as various antipasti, wood-fired pizzas, freshly made pastas, seafood and meat specialties, as well as classic desserts. Comprising 6 individual pavilions, Sami Sami is a perfect venue for small to medium-sized casual dining. Sami Sami's bar is on the cliff-edge lawn with 180-degree ocean views and is one of the resort's most popular sunset viewing spots. Located directly above Rock Bar, we recommend enjoying a few creative cocktails at the world-famous venue before a sumptuous dinner at Sami Sami.



Operating Hours Lunch & Dinner: 11:00am–11:00pm
Last order: 10:30 PM

Seating Capacity 195 guests
Pavilion 2 | 44 guests Pavilion 5 | 44 guests
Pavilion 3 | 15 guests Pavilion 6 | 40 guests
Pavilion 4 | 12 guests Pavilion 7 | 40 guests

Cuisine Italian

Famous for Lunch and dinner overlooking the stunning Indian Ocean on the cliff-edge





DAVA Steak & Seafood

For DAVA's copy, kindly refer as below:
 DAVA Steak & Seafood at AYANA Bali presents an Argentine-inspired grill experience overlooking Jimbaran's stunning coastline. The menu celebrates the art of parrilla grilling through refined Latin flavors, featuring highlights such as Ceviche de Atún, red tuna cured in lime and coconut leche de tigre with mango and coriander; Hamachi Tiradito, thinly sliced hamachi with glazed sweet potato and citrus-chili salsa; and Picanha Madurada en Café, Wagyu rump cap dry-aged with coffee for a deep, roasted aroma. Each dish reflects DAVA's signature balance of smoke, spice, and sophistication.

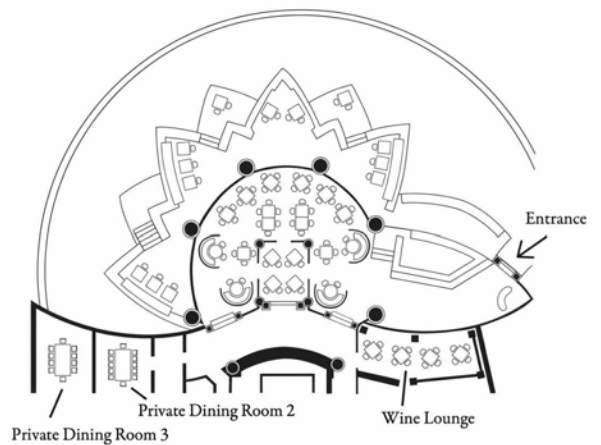
From 6 PM each evening, guests may begin their night at the Martini Bar, where handcrafted cocktails and ocean views create the perfect prelude to dinner. With two private dining rooms and a wine lounge accommodating up to 16 guests, DAVA provides an elegant setting for intimate celebrations or sophisticated business gatherings.

Operating Hours Breakfast: 7:00–11:00am
 Dinner: 6:00–11:00pm
 Last Order: 10:30pm

Seating Capacity 100 guests
 Private dining room 2: 10 guests
 Private dining room 3: 10 guests
 Wine lounge: 16 guests

Cuisine Steak and Seafood

Famous for Sundowner cocktails, steak and seafood





Karang Restaurant

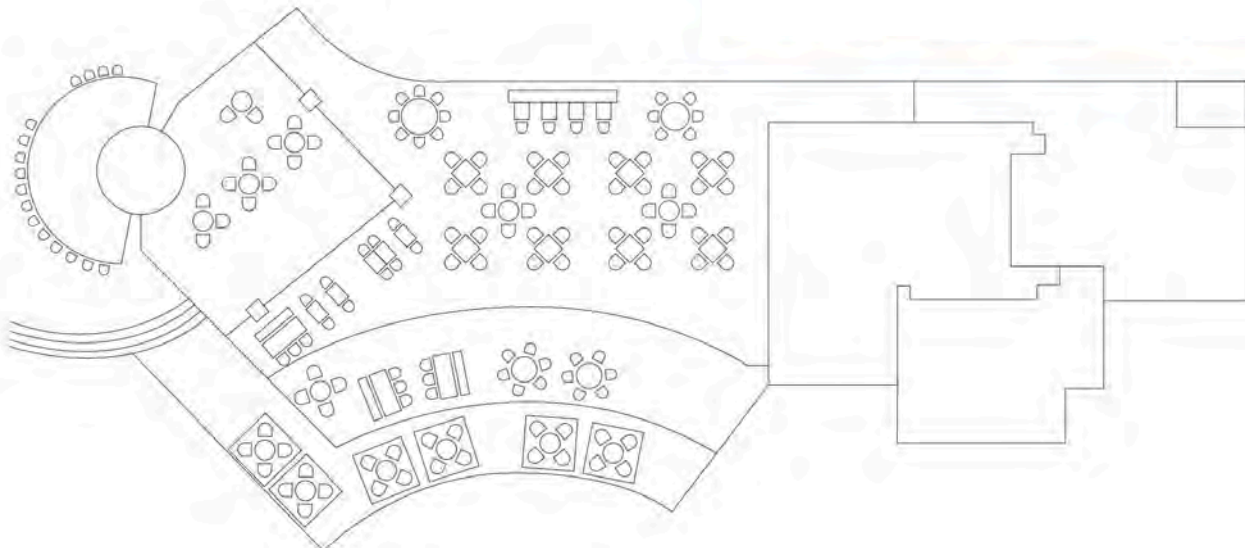
Savor the authentic flavors of Indonesia at Karang, an all-day dining restaurant celebrating the rich diversity of traditional Indonesian cuisine. Indulge in a delightful breakfast buffet and a selection of the Indonesian's signature dishes, each prepared with fresh, local ingredients. The restaurant features indoor and outdoor dining areas, including a relaxing poolside retreat. By day, the poolside bar offers a serene atmosphere, while it transforms into a full-service bar for lunch and dinner.

Operating Hours	Breakfast: 6:30–11:00am Dinner: 6:30–11:00pm Last order: 10:30pm
------------------------	--

Seating Capacity	194 guests
-------------------------	------------

Cuisine	Indonesian
----------------	------------

Famous for	Indonesian
-------------------	------------

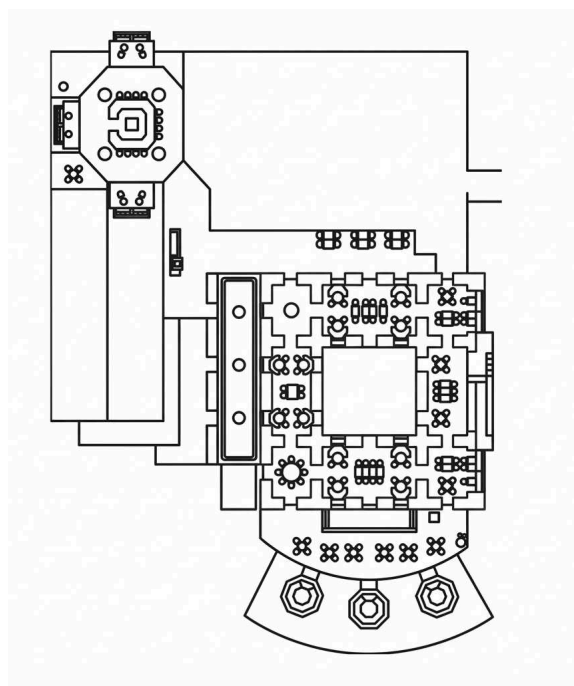




Scusa

AYANA Bali's new Mediterranean restaurant located at AYANA Segara Bali, Scusa serves the exquisitely layered flavors and bright aromas that Mediterranean cuisine is famous for. The 184-seat restaurant offers relaxed dining in the breezy terrace lounge surrounded by white and blue accents reminiscent of the islands scattered throughout the region. Guests can choose a wide variety of fresh salads, pasta and seafood and pair it with an extensive wine list highlighting the best Mediterranean white and red wines in Bali, along with exclusive bottles from Italian and Spanish boutique vineyards.

Operating Hours	Dinner: 6 – 11 PM Last Order: 10:30 PM
Seating Capacity	184 guests
Cuisine	Mediterranean
Famous for	Mediterranean cuisine with stunning ocean-inspired decor





LUNA Rooftop Bar

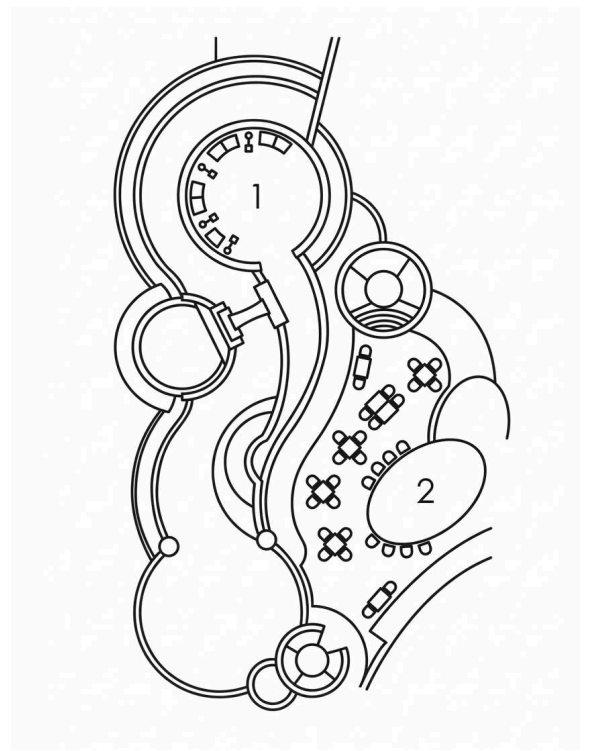
Witness the famed Bali sunset at the LUNA Rooftop Bar, perched atop AYANA Segara Bali. Marvel at the stunning sunsets while indulging in a farm-to-table experience featuring contemporary dishes, from the delicious Salmon Poke Bowl Sriracha to Indonesian favorites like Jimbaran-style Jagung Bakar and Mie Goreng Kaki Lima, made with the freshest local ingredients sourced from AYANA Organic Farm. As the sun sets, indulge in an array of Mediterranean and local tapas-style dishes that focus on flavor and freshness, including Gambas à la Plancha, Ceviche, and Antipasto, as well as crafted cocktails.

Operating Hours	Lunch & Dinner: 9 AM–11 PM Last Order: 10:30 PM
------------------------	--

Seating Capacity	68 guests
-------------------------	-----------

Cuisine	Global comfort food
----------------	---------------------

Famous for	Bar and light bites
-------------------	---------------------



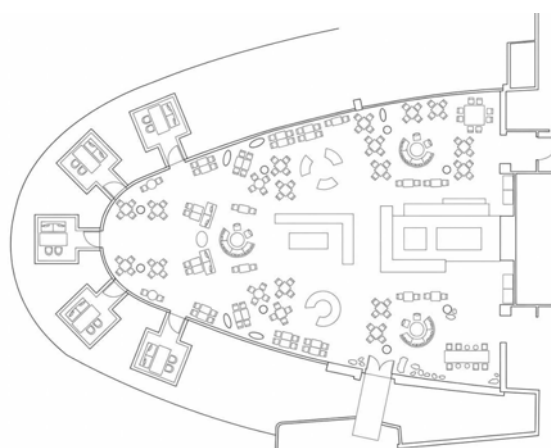


To'Ge

Nestled within a lush tropical garden and surrounded by clear koi ponds blooming with colorful water lilies, To'Ge is AYANA Bali's most vibrant all-day dining destination. Situated within the forested grounds of RIMBA by AYANA Bali, To'Ge promises to satisfy your craving for global comfort food. Whether you are in the mood for a sampling of Asia's street food culture such as Vietnamese rice noodle salad, Thai and Indian curries, or Indonesian village favorites, To'Ge never fails to impress. Daily buffet breakfast includes a wide selection of Asian and international favorites to ensure that your day begins with a smile featuring a stunning atmosphere.

Located close to RIMBA's meeting rooms, To'Ge is an ideal venue for your business lunch and provides a set lunch or buffet menu according to your request and size of group in a comfortable and relaxing setting.

Operating Hours	Breakfast: 6:30—11 AM Lunch: 11:30 AM—5 PM Dinner: 5 - 11 PM Last Order: 10:30 PM
Seating Capacity	240 guests Indoor 192 guests & outdoor 48 guests
Cuisine	Global comfort food
Famous for	Buffet breakfast, lunch, and dinner



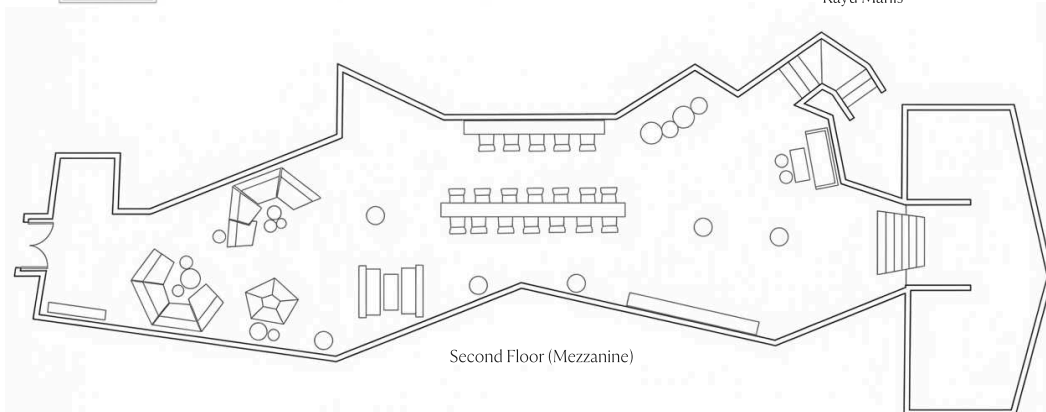
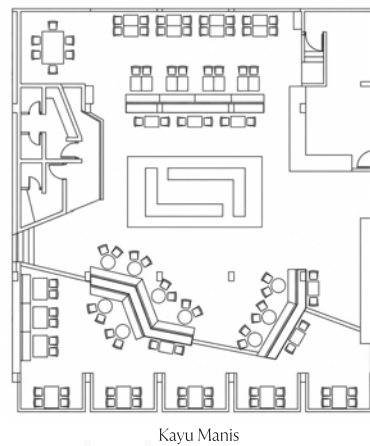
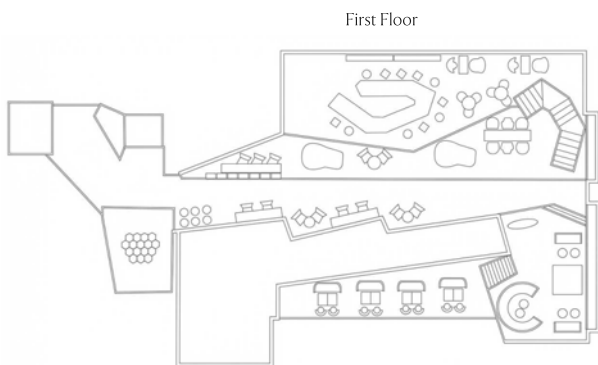
UNIQUE Rooftop Bar & Restaurant

Chic pool club by day and spectacular sunset spot for stylish cocktails and Mexican-inspired dining by night, UNIQUE Rooftop Bar & Restaurant features a stunning rooftop location above RIMBA by AYANA Bali. UNIQUE's contemporary design is based around an inviting central bar and 25-meter infinity pool that faces one of Bali's most captivating sunsets.

Multi-level seating provides panoramic 360-degree views from any location. Invite colleagues or guests to dine in a stress-free setting, as delicious Mexican cuisine is served poolside on an oversized daybed. With capacity for 150 guests in seated style, or 300 standing guests, UNIQUE is an impressive venue for welcome parties, social networking, casual gatherings or business meetings. For a more formal ambience, the second floor function area invites you to experience a world-class venue for private events and unforgettable dinners.



Operating Hours	Lunch & Dinner: 11 AM – 11 PM Last Order: 10:30 PM
Capacity	Restaurant & Bar Seated 158 guests Reception 292 guests 1st floor: Seated 80 guests Reception 140 guests 2nd floor: Seated 78 guests Reception 152 guests
Rooftop Function Area	Buffet style 120 guests
Cuisine	Mexican
Famous for	Sunset cocktails and poolside lunches, afternoon tea and casual dinners



Kampoeng Bali



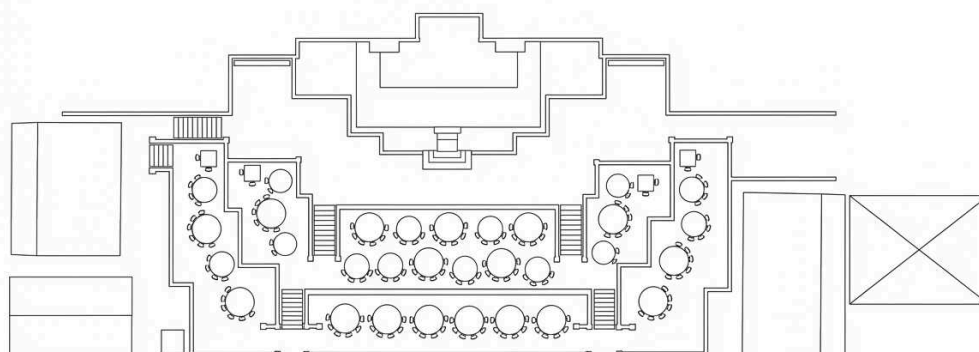
Experience Bali's yesteryear with a culinary journey at Kampoeng Bali, RIMBA's distinctive Balinese cultural performance restaurant. Specially designed to welcome you into the warm embrace of an authentic Balinese village, meander along an expansive lake setting bordered by a lush rice paddy. Inspired by Bali's rich cultural heritage and exotic cuisine, indulge the senses during one of Bali's legendary sunsets, as a traditional market atmosphere comes to life. Theatrical Kecak performances mesmerize and delight guests of all ages, while a sumptuous buffet with live cooking stations invites you to sample the island's most famous specialties including babi guling (suckling pig).

Operating Hours Sunset Ritual: 6—6:30 PM
 Balinese Buffet: 6:30 PM
 Kecak dance performance: 7:15—8 PM

Seating Capacity 250 guests

Cuisine Balinese buffet

Famous for Buffet dinner with traditional dance performance



Liu Li Palace Seafood Restaurant



Liu Li Seafood Palace at AYANA Bali brings the elegance of Cantonese and Szechuan cuisine to the island, blending time-honored traditions with modern refinement. Inspired by the ancient Chinese art of *liu li* colored glass, the restaurant offers exquisite dishes crafted with rare ingredients and precise techniques, from luxurious hot pot experiences to signature delicacies like Mini Buddha Jumps Over the Wall and Cantonese-style Suckling Pig. With sleek interiors, a live seafood aquarium, and 9 private dining rooms, Liu Li sets the stage for everything from intimate dinners to grand celebrations.

Operating Hours

Weekdays

Lunch: 11 AM—3 PM (*last order 2:30 PM*)

Weekends Lunch

Lunch: 10 AM—3 PM (*last order 2:30 PM*)

Dinner: 5:30—10 PM (*last order 9:30 PM*)

Seating Capacity

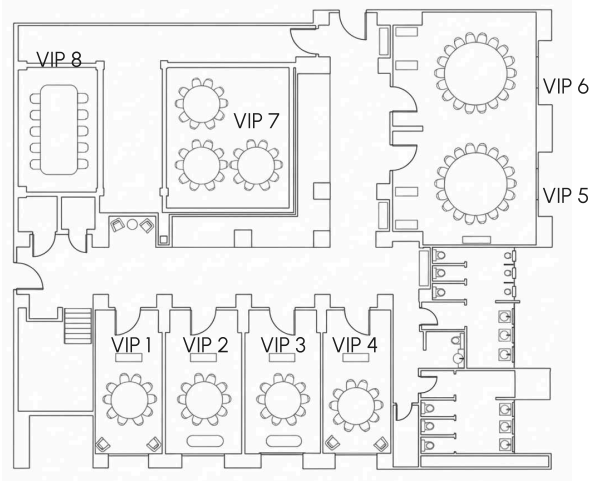
300 guests

Cuisine

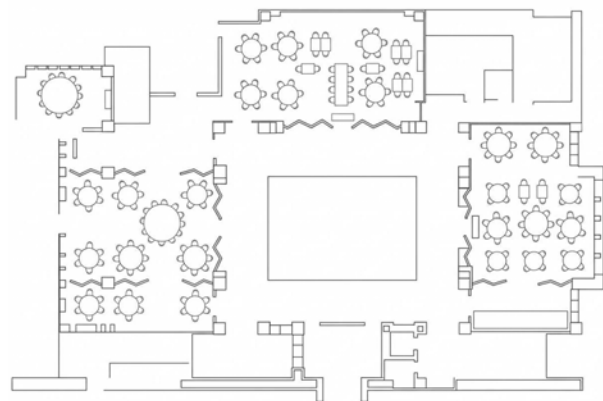
Cantonese and Szechuan

Famous for

Hot pot and seafood delicacies



LOWER GROUND FLOOR



UPPER GROUND FLOOR

Venue	Location	Measurements (meters)	Venue Size (sqm)	Maximum capacity (pax)					
				Reception	Theater	U-Shape	Classroom	Round Table	Hollow square
VIP Room 1, 4	Liu Li 1st Floor	6×4	25	12	25	15	12	8	18
VIP Room 2, 3	Liu Li 1st Floor	6×4	30	14	30	15	18	12	18
VIP Room 5, 6	Liu Li 1st Floor	6.5×6	45	—	45	18	20	50	20
VIP Room 7	Liu Li 1st Floor	7.5×4	40	20	40	21	24	30	24
VIP Room 8	Liu Li 1st Floor	10×4.5	40	—	40	21	24	12	24
VIP Room 9	Liu Li 2nd Floor	7.5×5	35	14	50	30	30	20	36
Dining Room 1	Liu Li 2nd Floor	12×11	205	120	—	—	—	140	—
Dining Room 2	Liu Li 2nd Floor	15×8	145	100	—	—	—	100	—
Dining Room 3	Liu Li 2nd Floor	12.5×8.5	125	90	—	—	—	80	—

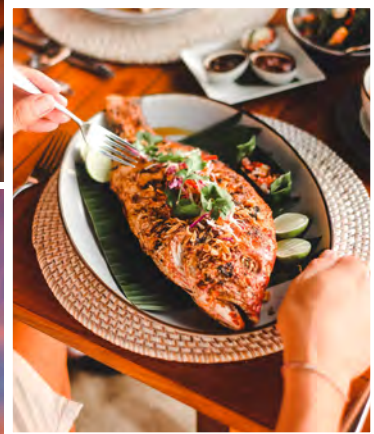
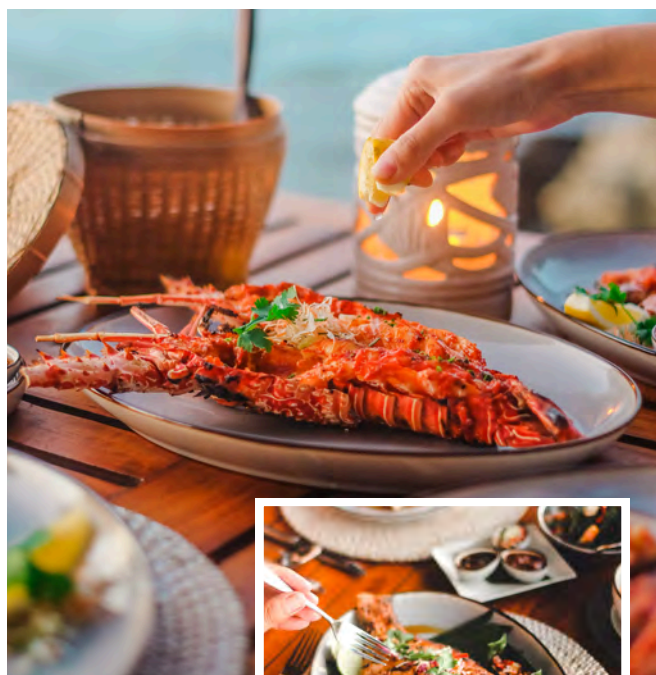
Culinary Excursions

AYANA Bali showcases a total of 30 exceptional restaurants, cafés, and bars, as well as specific facilities designed for MICE events. Here is a selection of fascinating venues to enhance your culinary journey.



Kubu Beach Club

Operating Hours	9 AM—7 PM Food & Beverage Order 11 AM - 6 PM
Capacity	50 guests
Cuisine	Traditional Indonesian dishes and tapas



KISIK Bar & Grill

Operating Hours	5:30—11 PM (last order 10:30 PM)
Capacity	112 guests
Cuisine	Seafood barbeque



Forest Bar

Operating Hours	9 AM—6 PM Food & Beverage Order: 11 AM—5:30 PM
Cuisine	Light bites



Damar Terrace

Operating Hours	11 AM – 11 PM (last order 10:30 PM)
Capacity	78 guests
Cuisine	Asian



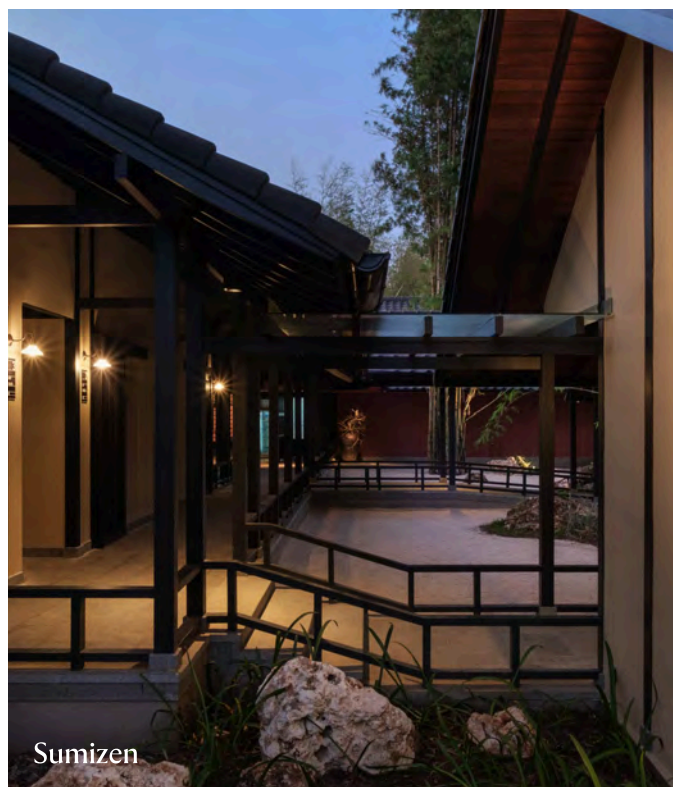
Orchid

Operating Hours	11:00 – 19:00 (last order 18:30) Afternoon Tea 14:00- 17:00
Covers	72 guests
Cuisine	Specialty Cakes & Afternoon Tea



HonZEN

Operating Hours	Lunch: 12–2:30 PM Dinner: 6–10 PM (last order 9:30 PM)
Capacity	70 guests (teppanyaki: 23 seats; main dining: 36 seats; sushi: 11 seats)
Cuisine	Japanese teppanyaki and sushi omakase



Sumizen

Operating Hours	Lunch: 12–2:30 PM Dinner 6–10 PM (last order 9:30 PM)
Capacity	52 guests (private room 1 & 2: 12 seats; private room 3: 8 seats; private room 4 & 5: 16 seats; private room 6: 4 seats; and private room 7 & 8: 12 seats)
Cuisine	Japanese yakiniku

Team Building & Leisure

At AYANA Bali, business and pleasure do mix. The integrated resort's comprehensive facilities include meeting rooms, outdoor garden areas, 14 stunning swimming pools, a breathtaking private beach, 30 restaurants and bars, AYANA Spa, a Thalassotherapy Pool, and 18-hole golf putting course. Located just steps away from your venue, don't forget to have a little fun when you are ready for a break, as you have. You have a world of choice without having to set foot outside the property. For incentive groups, AYANA Bali provides various team building programs, as well as an array of interesting activities, including Kids' Clubs for accompanying family members. Ask our planning team about combining fascinating exciting leisure activities within your corporate meeting schedule to help re-energize participants for their next session, which is an effective motivational tool for successful events.

Team Building Programs

Hangin Competition	Gebogan
Krupuk Eating Competition	Kite Making
Tug-of-War	Sunrise & Sunset Yoga
Bakiak Race	Meditation Break
Trust Walk	Sunrise & Sunset Fun Run
Gunny Sack Race	Thalassotherapy pool session
Rabbit Fun Race	Cooking Class
Coconut Bowling	Mixology Competition



Ocean Beach Pool



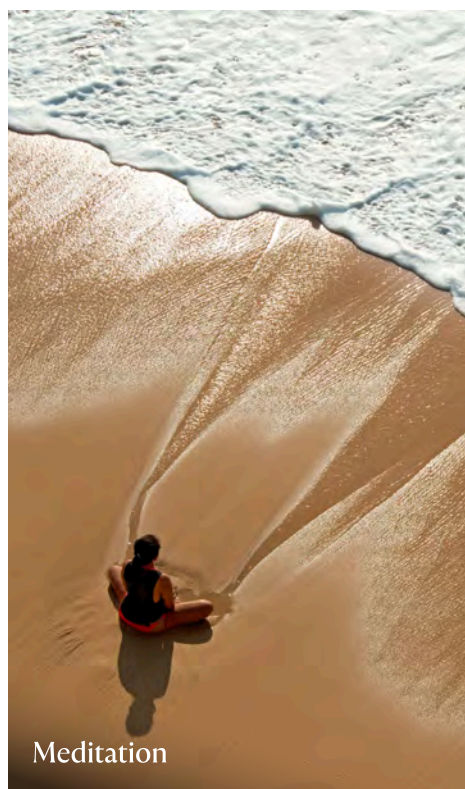
Thalassotherapy Pool



Fitness Studio



Yoga



Meditation



Putting Golf



Jogging Track

Leisure Facilities / Activities

AYANA Spa
53 treatment rooms and Thalassotherapy Pool

14 swimming pools

Secluded beach

Golf putting course

2 tennis courts

3 fitness centers

Yoga

Jogging track

Cooking school

2 kids' playgrounds

Shopping Arcade



Jalan Karang Mas Sejahtera, Jimbaran, Bali 80364, Indonesia

AYANA +62 361 702 222 | info@ayanaresort.com | RIMBA +62 361 846 8468



AYANA.COM

APRIL 2026